



FAMILY
PROMISE
METROWEST

ANNUAL REPORT

20
18



Executive Director Sue Crossley (left) and Board Chair Donna Angelico (right) welcome Family Promise founder Karen Olson to our new Day Center.

DEAR FRIENDS,

The year 2018 began with anticipation as we prepared our new Day Center to become home. In January, construction was well underway with the kitchen taking shape, office flooring rolled out, and the final logistics in the works for our April move. That winter will be fondly remembered as a time of anticipation, excitement, and managed chaos, as we transitioned into our beautiful new home.

We settled in over the spring months that followed, learning which keys went with which doors, how to use our new phone system, and the best way to open a skylight with a long pole. At the same time, we were able to reflect on and celebrate the incredible accomplishment of this new Day Center. If we haven't said it enough, we are so grateful to all of you who made our dream a reality.

With the purchase of the building and sequential growth of the organization, we also began looking carefully at how to build capacity to sustain our growth. In February, a board retreat led by several consultants resulted in valuable recommendations for restructuring board committees, policies, and recruitment. With a stronger board structure, we were pleased to welcome several new board members over the year who brought a wealth of new experience and passion for our mission.

For our programs, we celebrated ten years of providing shelter with our congregations and volunteers, and completed our first full year of offering the LIFE homelessness prevention program. We had estimated serving 6 to 8 families in our first year; in the end, we served 14 families who each offered an important lesson on the challenges that brought them to near eviction. Medical emergencies, the loss of reliable transportation, lay-offs, and reduction in employment were just some of the reasons these families fell behind in rent and needed assistance. We are proud of our comprehensive approach to supporting families and learn more every day about how to further enhance our programming.

From all our families, we are endlessly inspired by their perseverance and commitment to making change in their lives. And from all of you, our incredible community of support, we continue to make a difference together as our journey to end homelessness forges on, one family at a time.

With gratitude,

A handwritten signature in cursive script that reads "Sue Crossley".

Sue Crossley
Executive Director

A handwritten signature in cursive script that reads "Donna M. Angelico".

Donna Angelico
Chair, Board of Directors

OUR STORY

OUR MISSION

To transform the lives of families with children who are homeless by mobilizing a diverse community to provide shelter, education, and comprehensive support.



Members of the Wellesley Village Church and Christ Lutheran Church of Natick first conceived of Family Promise Metrowest (FPM) in 2003 in response to an alarming rise in family homelessness and a growing awareness that their congregations could play a role in addressing this crisis. After five tireless years of groundwork, the vision of a Family Promise affiliate in metrowest Boston came to fruition with the welcoming of our first family into shelter in October of 2008. FPM is now one of over 200 affiliates of Family Promise National located in 43 states across the country.

Our approach to addressing family homelessness and housing instability is simple. We believe motivated, hard-working families can move out of poverty and into stable homes if they are given encouragement, guidance, and the resources to reach their goals. We know if we all take a role in addressing this issue as a community, we can change lives permanently.

To provide shelter, our 19 host congregations convert their classrooms into bedrooms for our families, one week at a time, three to four weeks a year. With the help of 31 support congregations and volunteers from the community at large, they also provide meals, friendly companionship, and overnight staffing.

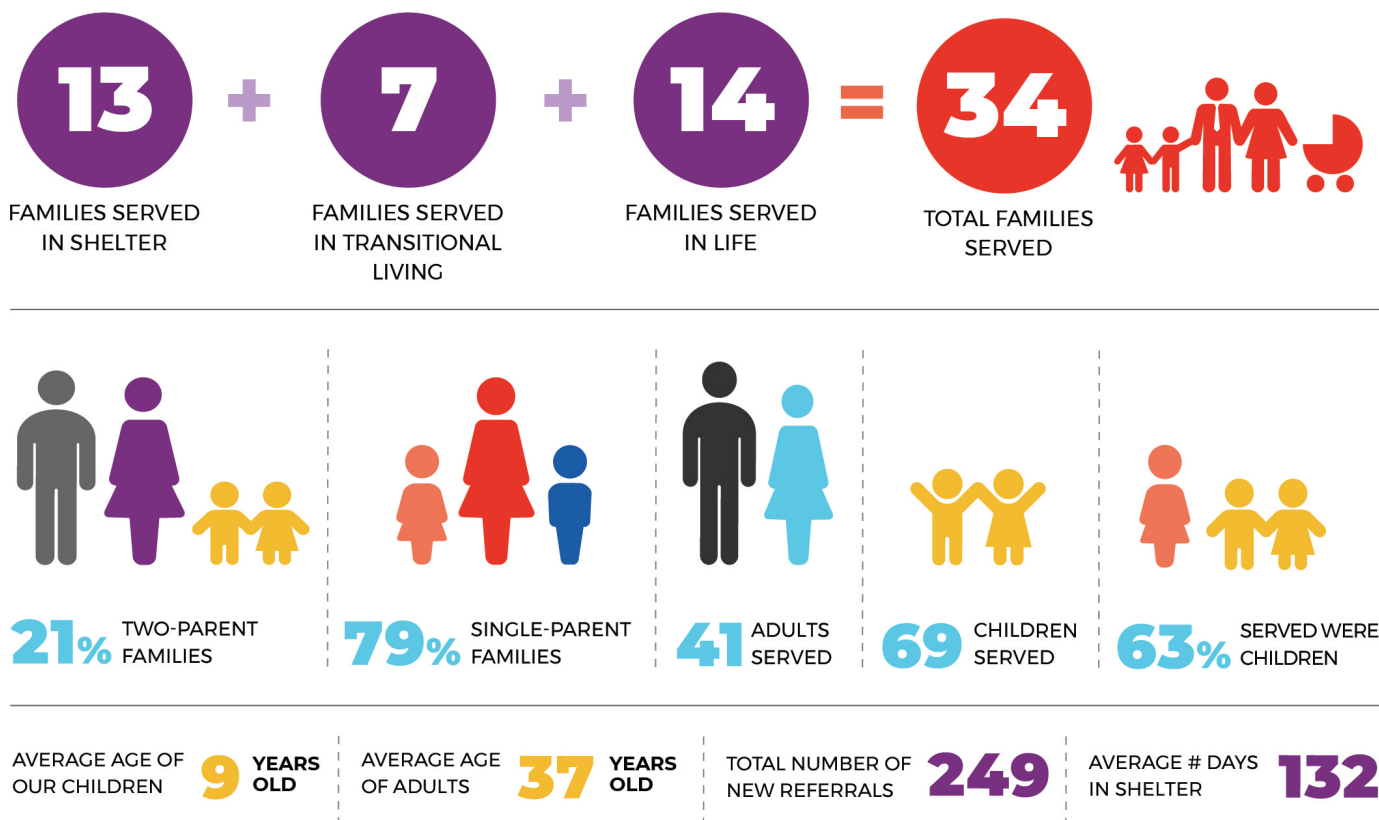
Our 3,000+ trained volunteers embrace our families with a network of people who truly care.

Family Promise is much more than an overnight shelter however. During the day, our professional staff work with families to provide intensive support in accessing community resources, securing stable employment and childcare, creating a sustainable budget, and setting long-term goals to address the root causes of their homelessness or near-eviction.

As our organization has grown over the last decade, we have expanded our programming to meet the needs of our families. In addition to shelter and case management, we also offer the Steps to Success program, which provides educational and career-building opportunities, and a Transitional Living program that supports families for one year after leaving shelter. In 2017, we launched LIFE, a homelessness prevention program that helps families avoid eviction by providing subsidies for rent in arrears, advocacy with landlords, and one year of case management and life-skills workshops. When our hard-working families and passionate community of volunteers, staff, and donors come together, incredible change happens. Our families dare to imagine a new future, and then bring their dreams to life. ♦

OUR IMPACT: 2018

Our Families



Life Program



Steps to Success Program



Shelter Program

Health



of uninsured families secured health insurance



of children with identified special needs accessed essential resources and supports



of families addressed outstanding physical or mental health needs

Finances



of families reached their savings goal



of families reached their debt reduction goal

Housing



OF FAMILIES MOVED FROM SHELTER INTO AFFORDABLE COMMUNITY HOUSING

Childcare



of families with preschool children secured daycare



of families with school-age children secured after-school and vacation programming

Transportation



OF FAMILIES

ESTABLISHED RELIABLE TRANSPORTATION TO SUPPORT EMPLOYMENT



2

families



received cars donated by our network

Transitional Living Program



of families reached their savings or debt reduction goal by program graduation



of families remained in safe, affordable housing at program graduation



of families maintained daycare and after-school programming for their children

PROGRAM HIGHLIGHT

The Transitional Living Program

In 2013, five years after launching our affiliate, we picked up on a worrisome trend: former guests were returning to us a year or two after leaving shelter, seeking additional help in maintaining their stability in the community. What we humbly realized was that although we had served them well in shelter, we hadn't done enough *after* shelter to help them adjust to their independent lives once again. To continue to serve our families best, we needed to do more to

support their transition back into the community.

With this realization, the seeds of the Transitional Living Program were planted. Launched in 2013, our Transitional Living Program (TLP) is part

of a continuum of services that ensures long-term sustainability for our families. While in shelter, we help families set and attain goals that address the root causes of their homelessness. When they move into their own homes, they need a different kind of guidance, in addition to extended financial support. For the first year after moving out of shelter, TLP addresses these needs. Case managers help families draft new goals and access community resources, and subsidies are provided for up to one year as families adjust to their new budgets.

When this program began, our approach to stabilizing a family's housing was to simply subsidize their rent. But over the years we have taken a more creative approach to address the unique challenges faced by our families. New models of support have included the following:

- We agreed to be a guarantor on a lease when a landlord was hesitant to rent to a family due to a past eviction. At the end of the year, the family was able to renew the lease independently. We have since co-signed two more leases for other families.
- We started an "adopt a family" pilot with an individual donor who committed to a set monthly subsidy for one year while the family worked to increase their income. This approach has since been used with other families.
- For two families who were having trouble finding affordable apartments, we rented a four-bedroom home that they moved into together. After a year in this subsidized housing, these families will move out and two other families will replace them.
- We are building a duplex with the Natick Affordable Housing Trust that will provide affordable, transitional housing for two families with adults that are pursuing higher education degrees. The families may live in this home for up to three years while they finish their collegiate programs.

As we look to the future, we are exploring ways to further enrich our TLP offerings, such as increasing our housing resources, deepening our relationships with property managers and landlords, and creating a network of volunteers who can support our families as they move into new towns. The resources of our volunteers and the goodwill of our communities offer endless potential for the growth of this program. We can't wait to see what doors will open next. ♦

There's an old quote, 'It takes a village to raise a child.' Family Promise is my village. Not only did I get the love and support I needed, but I now have the tools to succeed.

**—Nicole
TLP Program Participant**

Family Promise helps families succeed. As long as you are willing to do the work, they promise to work hard with you.

**—Sarah
TLP Program Participant**

FAMILY HIGHLIGHT

How We Serve Those Who Serve

Jackie arrived at our office in March of 2018 with her beautiful six-year-old, a full-time job, college education, and nowhere to call home. Saddled with student loans and ever-increasing rent, her moderate income had stretched as far as it could go. Although she'd held a steady job in the disabilities field for years, with only an undergraduate degree, her paycheck had flatlined. The math simply wasn't in her favor anymore.

It was an easy decision to welcome Jackie's family into our shelter program. We knew that giving her a welcoming place to land and catch her breath would stabilize her family quickly and allow her to set a new path forward. What we didn't know was just how hard she was willing to work.

Jackie's greatest challenge is one that we've seen many times: choosing a career in a service field, while ripe with rewards, often doesn't offer the financial benefits needed to support a family. Helping Jackie figure out how to stay in her chosen field while also finding a way back into affordable housing was going to take work.

In classic Family Promise fashion, it took a village of resources and connections to find options, but sure enough, a door opened: an opportunity to apply for a fellowship program in the disabilities field. If chosen, Jackie would spend a year as a leadership fellow, followed by a year of coursework to earn a master's degree in public administration. With our enthusiastic encouragement, Jackie jumped in. She had only two weeks before the application deadline, so she quickly tackled essays, interviews, and options for shifting her work and childcare schedules to accommodate classes. The herculean effort paid off: Jackie earned admission to the program in July and with that, her new path forward was revealed.

In September, Jackie and her daughter moved from our shelter into the Transitional Living Program, just in time to start classes and a new school year for her daughter. Moving into a home with another guest family, she traded evenings at the congregations for evenings in front of her computer, or cooking dinner in her own kitchen. Through the TLP and Steps to Success programs, we've continued to support Jackie with rent, transportation, and educational subsidies, to help her keep the family budget balanced while she's in school.

We are thrilled, and not at all surprised, to report that in June 2019, Jackie graduated from her fellowship program and had registered for her fall coursework, putting her on track to earn her MPA by 2020. We can't overstate our pride in Jackie and all that she has overcome to achieve this lofty goal. We are so lucky to have served her, making it possible for her to continue serving others. ♦





OUR CONGREGATIONS

HOST

Christ Lutheran Church, Natick
 Christ The King Lutheran Church, Holliston
 Community United Methodist Church, Wayland
 Congregation Or Atid, Wayland
 The Dover Church
 Federated Church of Ashland
 First Church Natick, UCC
 First Parish in Framingham UU
 Fisk Memorial United Methodist Church, Natick
 Massachusetts Conference of the UCC, Framingham
 Peace Lutheran Church, Wayland
 Pilgrim Church, Sherborn
 St. Andrew's Episcopal Church / Lutheran Church, Framingham
 St. Paul's Episcopal Church, Natick
 Temple Shir Tikva, Wayland
 Unitarian Universalist Area Church, Sherborn
 Unitarian Universalists of Wellesley
 Wellesley Village Church
 Wellesley Hills Congregational Church

SUPPORT

Carter Memorial Methodist Church, Needham
 Common Street Spiritual Center, Natick
 Congregation Beth El, Sudbury
 Congregational Church of Needham
 The Eliot Church of Natick
 First Congregational Church, Holliston
 First Baptist Church, Needham
 First Baptist Church, Framingham
 First Parish Unitarian Universalist, Medfield
 The First Parish in Wayland
 First United Methodist Church, Framingham
 The Good Shepherd Parish, Wayland
 High Rock MetroWest, Needham
 Islamic Center of Boston, Wayland
 Memorial Congregational Church, Sudbury
 Milestone Church, Natick
 Most Precious Blood Parish, Dover
 Newton Highlands Congregational Church, Newton
 Presbyterian Church in Sudbury
 St. Andrew's Episcopal Church, Wellesley
 St. Bridget Parish, Framingham
 St. Cecilia Parish, Ashland
 St. John Evangelical Lutheran Church, Sudbury
 St. Mark's Episcopal Church, Southborough
 St. Mary's Catholic Church, Holliston
 St. Theresa of Lisieux Church, Sherborn
 Sha'arei Shalom, Ashland
 Temple Beth Elohim, Wellesley
 Temple Beth Shalom, Needham
 Temple Beth Torah, Holliston
 The United Church of Christ in Medfield
 Wesley United Methodist Church, Framingham

OUR VOLUNTEERS

1st Cindy Lombardo Award Granted

A member of the Unitarian Universalist Area Church in Sherborn, Donna Allen began volunteering as an overnight host in 2013. She is a regular who serves at least once a month and sometimes as much as once or twice a week when the need is great. She has slept at all of our host sites and forthrightly acknowledges that she is “the volunteer who sleeps around.”

Children’s faces light up when Donna arrives for her shift. She is a constant presence for our guests, and her kindness and genuine warmth provide a safe shelter for all at a difficult time in their lives. In the words of one guest, “She made me feel comfortable to be around her and talk about everyday things. I never felt judged for being part of the shelter program. Like a mother, she always asked if we had dinner.”

It was with the greatest pleasure that we presented our first annual Cindy Lombardo Volunteer Award to Donna at our Keep the Promise event on November 3, 2018. Named for the former lead coordinator at Temple Shir Tikva in Wayland, the Cindy Lombardo Volunteer Award honors volunteers who share Cindy’s enduring model of welcome, warmth, and compassion, upholding her spirit through their loving care and dedication. Donna was an easy choice for this recognition, and we were thrilled to acknowledge and celebrate her extraordinary commitment to the families we serve.



Our Volunteer Ranks Keep Growing

Another measure of the success of our organization is in the number of volunteers we recruit and train on an annual basis. These eager participants come to us from across the community—from congregations, schools, businesses, and the community at large—and go on to serve our families in countless ways. Without the generosity and commitment of each one of these people, our organization simply would not exist—they are the foundation of everything we do. We are proud to report that in 2018 we conducted 44 volunteer orientations, training 336 new people to support our families. This means that over the last ten years we have now trained more than 3,000 volunteers. Our family just keeps growing! ♦

“

Volunteering for Family Promise does not feel like work. I have learned and laughed so much with all these families. They have given me more than I imagined possible.

—Faridah Kassim, Volunteer

”

OUR FINANCIALS

STATEMENT OF FINANCIAL POSITION

ASSETS

Cash	\$290,276	\$497,610
Other current assets	\$265,437	\$233,003
Property and equipment, net	\$1,434,448	\$1,167,296
Total other assets	\$62,400	\$196,904
TOTAL ASSETS	\$2,052,561	\$2,094,813

LIABILITIES

Current liabilities	\$89,789	\$180,189
Mortgage, net of current portion	\$371,564	\$735,330
TOTAL LIABILITIES	\$461,353	\$915,519

NET ASSETS

Net assets without donor restrictions	\$1,242,584	\$467,460
Net assets with donor restrictions	\$348,624	\$711,834
TOTAL NET ASSETS	\$1,591,208	\$1,179,294

TOTAL LIABILITIES AND NET ASSETS

\$2,052,561 **\$2,094,813**

STATEMENT OF ACTIVITIES

SUPPORT AND REVENUE

Gifts, grants, and contributions	\$695,062	\$1,070,582
Fundraising events	\$384,009	\$261,634
Donated goods and services	\$20,711	\$71,029
Interest income	\$1,328	\$762
Miscellaneous income	\$18,502	\$19,089
TOTAL SUPPORT AND REVENUE	\$1,119,612	\$1,423,096

EXPENSES

Program Services	\$470,011	\$396,108
Management and General	\$127,704	\$100,566
Fundraising and Community Outreach	\$109,983	\$132,759
TOTAL EXPENSES	\$707,698	\$629,433

CHANGE IN NET ASSETS

Changes in net assets without donor restrictions	\$775,124	\$109,061
Changes in net assets with donor restrictions	\$(363,210)	\$684,602
TOTAL CHANGE IN NET ASSETS	\$411,914	\$793,663

THE CAPITAL CAMPAIGN

Our Community Rises to the Challenge

When we began our “A Place to Call Home” capital campaign in the fall of 2017, we approached the task thoughtfully by forming a committee and hiring experienced consultants to get us started. With a goal of \$1.2 million, this was a whole new venture for us, and while we were excited to begin, we were also warned to be realistic about the timeline. “It can take up to ten years,” we were told, and having no previous experience in raising this level of funds, we were cautious in setting our goal for completion.

Yet it was clear from the beginning that our passionate and caring community shared the excitement for our new home and wanted to be part of this next chapter. The pledges that began to roll into our office were inspiring and reflected the entire spectrum of our donors, from children with their “Houses for Change” filled with coins they collected to large donors pledging \$50,000 or more. We also received contributions from new donors who learned about our campaign from friends and gave for the very first time. While most of our donors have been individuals, we’ve also been truly grateful to the many businesses, schools, and congregations from our network who have stepped up to this campaign. Each one of these donors has been integral to our growth over the years and shares our pride in what we have accomplished together.

As a result of the generosity of this community, as of April 30, 2019 we are proud to have raised over \$1.1 million of our goal, which we are now confident we will reach by the end of this year. With the level of success so early in the campaign, we never had to use the line of credit opened for the construction, which totaled over \$350,000. As for our mortgage, on April 30, 2018 our principal was \$747,108; on April 30, 2019 it was \$232,682. Pretty amazing.

To all of you who have supported our campaign, we are forever grateful. Your commitment to our families, belief in our organization, and incredible generosity has exceeded our expectations. Together we have built a beautiful new home for our families today and in the years to come. ♦



OUR SUPPORTERS

Grant and Foundation Backing Increases

Over the last few years, Family Promise Metrowest has experienced rapid and exciting growth. We've added new programs, new staff, and even a new home for our organization. Not surprisingly, with this expansion our need for financial support has also grown, and we've been repeatedly humbled by the generous response from our community of foundations, businesses, and civic organizations. Their steady faith in our mission inspires us every day. In 2014, we received a total of \$14,500 from six organizations; in 2018, we gratefully accepted \$116,140 from nineteen supporters. These grants ranged from a \$500 donation given by the Friends of Natick Boys Basketball to \$40,000 in donations from the TJX Foundation. The support of each community partner, large or small, enables us to serve more families, and has ensured that our growth is both successful and sustainable.

In 2018, we were also selected as a grant recipient in a national partnership between Family Promise National and Help Us Move In (HUMI), a Washington state-based nonprofit working with communities to create and fund programs for families facing housing crises. We were one of ten affiliates in 2018 to receive a two-year \$20,000 Challenge Grant to support our LIFE program. These grants are not hand-outs however: every affiliate must raise an additional \$10,000 each year before HUMI awards their match. We are so thankful to one of our long-standing community partners, Middlesex Savings Bank, for donating the first \$10,000 match.

Recognition from Senate President Spilka

While many nonprofits rely on public grants, Family Promise Metrowest has never applied for government funds. We believe that by utilizing the existing resources of our congregations to provide shelter and a diverse network of community volunteers and donors to provide support, we can address family homelessness creatively and economically.

So when we received a call last spring informing us that we were included in the state's 2018 budget, needless to say, we were surprised. We learned that Senate President Karen Spilka, then chief Senate budget writer, advocated for investments through the Department of Housing and Community Development (DHCD) line item. She had heard from the region she represents that we were a valuable community organization and wanted to support our work. Based on her efforts we received a one-time investment of \$50,000 from DHCD to help fund our programming. We thank Senator Spilka for believing in us and caring about the families we serve.



FPM staff and board members accept the 2018 Community Business Shining Light Award from the Natick Education Foundation. Photo by Renee Bender-Cohn.

Shining Light Award

On March 21, 2018, at a ceremony hosted by The Center for Arts in Natick, the Natick Education Foundation bestowed the 2018 Community Business Shining Light Award on Family Promise Metrowest. Recognizing the integral role that businesses and organizations play in the health and vitality of our community, this award is a significant honor that we were thrilled to accept.

In explaining our nomination, the Foundation stated: "Family Promise Metrowest perfectly exemplifies the important and life changing impact that businesses can have. The founding vision was to build an interfaith community of congregations committed to addressing the issue of family homelessness, knowing that it requires community responsibility in order to create real change." We are so proud to be part of a community committed to working together to build a better future for all. ♦

OUR EVENTS

Our Annual Events Continue to Grow

On a cold and blustery April morning, we held our 9th annual Walk to End Homelessness. But the weather didn't dampen the spirits and enthusiasm of over 800 walkers who came out to show their support for families in our community that are struggling with homelessness and housing insecurity. The 5K loop through Natick center featured walkers of all ages and scores of canine friends too. We were thrilled to announce that our caring and dedicated community helped us surpass our fundraising goal once again, bringing in over \$168,000 to fund our programs for families in need. Each one of our sponsors, walkers, donors, and volunteers made this magic happen, and we are ever grateful.

After warmer months filled with our Volunteer Appreciation Dinner, Mother's Day celebration, Open Houses, and Family Promise Week festivities, the November chill ushered in our second major event of the year: our 5th annual Keep the Promise auction and food tasting. And once again, the warm hearts and generous spirit of our community helped us exceed our lofty goals. With over 500 guests in attendance—a record-breaking showing—we enjoyed delectable treats from area restaurants, the musical offerings of talented volunteers, and an auction filled with exciting baskets, gift cards, tickets, and more from area businesses and donors.

We raised a total of \$235,000 at the event, with \$118,500 donated specifically to our "A Place to Call Home" capital campaign for our new Day Center. We were so grateful for the restaurants and breweries who donated their wonderful food and drink; our loyal sponsors and tireless event volunteers; and everyone that attended this inspirational evening. We can't wait to see you next year! ♦

In-Kind Event Donors

We would like to thank the following companies who donated goods and services to make our 2018 events a success:

110 Grill
Amazon Pop-Up
American Girl
Balance Wealth Advisors
Bertucci's
Blue Ribbon Barbeque
Boston Gourmet Chefs
Burton's Grill & Bar
Chick-fil-a
Conrad's Restaurant
Dion's Wine
Dunkin' Donuts
Hanto

Keefe Regional Technical School
Lola's Italian Groceria
Marathon Sports
Microsoft
Nordstrom Café Bistro
P.F. Chang's
Perpetuart
Red Heat Tavern
Sheraton Framingham Hotel
Skyboxx 109
Tavolino
The Lookout Taproom
The Melting Pot
Wegman's Food Markets
Whole Foods
WROR 105.7



DONOR HIGHLIGHT

Changing Lives, One by One

Over the past ten years, Family Promise Metrowest has witnessed countless transformations in the lives of the families we serve. While their achievements are a testament to their motivation and hard work, there is another essential factor to their success: our donors. Without all of you, the programs that serve them would not be possible.

With fierce competition between the 33,000+ nonprofits registered in the Commonwealth, why do our donors choose Family Promise Metrowest? To understand better, we spent time with one of our long-time supporters, Bob Brack. The former CEO of Barker Steel Company and a well-known local philanthropist, Bob not only gives generously to nonprofit organizations, he also takes the time to fully understand the mission and programs of the organizations he supports. He is deeply invested in our community, and eager to help fulfill its most pressing needs. Over the years, Bob has offered significant funding for our Transitional Living and LIFE programs, and was one of the first major donors to the capital campaign for our new Day Center. The following are excerpts from our conversation.

FPM: As a successful businessman, how did you end up turning your attention to the nonprofit world?

BB: It goes back to when my late wife, Joan, worked in special education in the Natick school system. I learned so much from her—what she was doing as a teacher but also as a case manager for children in need. In February 1986, she came home one day and explained that there was a student who was homeless, sleeping in his car. I couldn't imagine that someone in our town could be living on the street. We decided to invite the student to stay with us and he ended up becoming a part of our family. As a result, I saw firsthand the difference you can make in one person's life. This really marked the beginning of my involvement in organizations that support families living on the edge.

FPM: How did you first learn about the work of Family Promise Metrowest?

BB: My family belonged to the Eliot Church in Natick, one of FPM's network congregations. I was also serving on the board of the Foundation for Metrowest. Through my involvement with both of these organizations, I met FPM's first director, Beth Cooper, in 2010 and learned about the work you were doing for the homeless with the support of local congregations. It was clear you were making a real difference in people's lives. I already understood the importance of case management, which was key to your approach, so I was eager to get more involved.



FPM: You've been so responsive to our needs as we've grown over the last few years. Which projects have been most meaningful to you?

BB: The challenge of operating from the old Day Center in the basement of one of the congregations was significant. Over the years you had clearly outgrown the space, for both the families and the staff. I was so excited when I learned you were in a financial position to purchase a building and I wanted to be one of the first donors to support this new chapter in the life of Family Promise.

I also remember when you started the Transitional Living program. A family had been in shelter for a year and even though they were ready to move out in every other way, they weren't financially able to make the leap yet. You recognized that there was a gap to fill. They needed subsidies to help with the transition and case management to continue to reach their goals. Helping to support this program was pure common sense.

And now the LIFE program is another an important piece of what you are doing—keeping families in place to avoid becoming homeless. Again, providing the case management along with financial support makes such a difference. It is a wonderful model.

Working with Family Promise has been a privilege—what has been happening over the years is amazing. The bottom line is, any time you see an organization making a difference in people's lives in a sustainable way, it encourages people like me to give support in any way they can. ♦

OUR DONORS

\$75,000+

Bob & Joan Murray*

\$50,000-\$74,999

Johanna Ross*

\$20,000-\$49,999

Anonymous*

Bob Brack*

Cummings Foundation

Home Market Foods, Inc.*

Andrea & David Meyers*

Middlesex Savings Charitable Foundation

Sanofi Genzyme*

TJX Foundation*

Carol & Jay Virshbo*

Wellesley Congregational Church*

\$10,000-\$19,999

Digital Federal Credit Union

Gardner Hendrie & Karen Johansen

First Congregational Church, Natick*

William & Katherine Green

Help Us Move In (HUMI)

Susan & Donald Mykrantz*

Seta Nazarian*

Parmenter Foundation

Cecilia Stone*

Wellesley Hills Congregational Church

Mercy & Bancroft Wheeler*

\$5,000-\$9,999

Karen & Roger Andrews*

Adrienne & Michael Canning*

Charles River Apparel*

Maria Chase

Mitchell & Cynthia Coddington*

Mary Sue & Donald Cotton

Sue & Douglas Crossley*

Paul & Kimberly Dacier

Charles & Sharon Deehan*

Wade & Heidi Harper*

Islamic Center of Boston, Wayland*

Jeff Kinney & Rebecca Bourret*

Susan & John Kirk*

Donna Angelico LaCroix*

Dennis Lombardo*

Bob & Marilyn Marlette*

Laraine & John Marthinsen*

Morgan Molloy & Judith Merra*

Needham Bank

Newton Highlands Congregational Church*

Barbara & Edward Scolnick

Mark & Paula Ness Speers*

St. Andrew's Episcopal Church, Wellesley

Candace & Ernie Sutcliffe*

Temple Beth Elohim

The Village Bank*

Westfield Capital Management Company

Whole Foods Market

\$1,000-\$4,999

The 200 Foundation, Inc.

Christine & Reuben Ackerman

Ghazala Alam

David & Susan Alexander

Anheuser-Busch

Anonymous*

Avidia Bank

Kimberley & David Beattie

Carissa Becker

Carl & Sue Bell*

Joan Benzie*

Beth Israel Deaconess Medical Center

Veronica & Wayne Bloom

Irene Bloomstein

Tracy Boehme

Bose Corporation Charitable Fund*

Brookline Bank

Barbara & Fred Bunger*

Sarah & John Butter

Diana & Timothy Carroll*

Jeff & Anne Carter*

Christ Lutheran Church

Richard Ciccarelli*

Layne & Michael Clune*

Tim & Jessica Collins

Ruth Colson*

Audrey Colson*

Commonwealth Financial Network

Congregational Church of Needham

Kelli & Chris Connors

Kenneth & Carol Conway*

Cynthia Crino

DCU for Kids

Klarina & Mike Donoghue

Eastern Bank Charitable Foundation

Embrace Home Loans

ERA Key Charitable Association

First Baptist Church, Framingham

First Congregational Church, Holliston

Framingham Country Club Charitable Foundation

Framingham Rotary Club

Framingham Union Aid Association, Inc.

Maryellen Frawley



We give to Family Promise because it offers an opportunity for parents to break the bonds that perpetuate homelessness and build a new financially sustainable future.

—Edie & Harold Lohr Donors



Robert & Pam Gibson*
 Gold Marketing Group
 Greater Boston Real Estate Board
 Foundation
 Carole Greer*
 Alison Guzman
 Harriett & Robert Hallagan*
 Amanda Harrow
 Clifford Hayden
 Highrock Church MetroWest
 Garry & Elaine Holmes*
 HOPEsudbury
 Howard Brothers Builders, Inc.*
 Susan Kane*
 Bob & Pamela Koskovich
 Joyce Lafaver
 Evelyn & Peter Liffiton
 Harold & Edith Lohr*
 Lombardo's
 Joy & Roderick MacLeod*
 Paul Marecek
 Lynn & Alan Marks*
 Lauren & Richard Marks*
 JoAnne Marshall*
 Cathryn Marshall-Lorson
 The MathWorks, Inc.
 Kate & Judge McKee*
 MetroWest Medical Center
 Middlesex Savings Bank
 Milestone Church
 Karen & Jeff Miller*
 James & Judy Mongiardo*
 Seeme & Mario Moreira

New England Waterproofing, Inc.
 Maureen & Andy Nguyen
 NorthStar Insurance Services, Inc.
 North Star Lodge A.F. & A.M.
 Pabian Law
 Rebecca Parkhill & Robert Willett*
 Stacey & Dean Peasley
 Tom & Kate Piemonte*
 Ina & John Portnoy
 Hank & Susan Rauch
 Real Software Systems
 Morisa & Christian Reich*
 Elaine Reisman
 Jim & Ruth Roberts*
 Peg & Dwight Robinson
 Susan Rodman
 Jeff & Kathy Rodman
 Debbie & Richard Romanow
 Rubicon Builders
 Liza & David Ruether
 Sandy Selvey*
 John Shea
 Lecia Shronce*
 Jon & Rachel Sieber
 Ryan & Tracy Sockalosky*
 St. Andrew's Episcopal Church,
 Framingham
 Jeffrey Stark
 Adam Stavisky
 The Sudbury Foundation
 Unitarian Universalist Area Church,
 Sherborn*
 Unitarian Universalist Society of
 Wellesley Hills*

Village Churchwomen (Wellesley
 Congregational Church)*
 Melissa & Steve Webber*
 Wellesley Bank Charitable
 Foundation
 Wellesley Hills Jr. Women's Club
 Wells Fargo
 Dr. Richard & Mrs. Maureen
 Wooster*
 XFINITY/Comcast*
 Ellen & Stan Zagajeski*

\$500-\$999

Stacey Alcorn*
 Gretchen Lanka Allen
 Marlene Allen
 Reema Alshirawi
 Ameriprise Financial
 Quinta Andersen
 Jessica Bigge*
 Blackey Family Foundation*
 Steve Bradley
 Carole & John Brodrick*
 Gary Bukuras*
 Carney Management Co./Bernardi
 Auto Group
 Tara Ciongoli
 Kyle & Lindsay Crossley*
 Steve & Cathy Curbow
 Michele & Scott Devens
 The Dressing Well Charitable
 Foundation*
 Larry Dick & Lucia Frenkel
 Dimensions 3D
 Dion's Wine
 Kristen Duffy
 First Baptist Church, Needham
 Energy Fitness & Gymnastics
 Robert Franco
 Beth & Mike Frary
 Carol Fraser
 Friends of Natick Boys Basketball*
 Sian Godwin
 Charlene Harrow
 Hoffman Insurance
 Susan & Neal Karelitz
 Amy & Andrew Keith*
 Bill & Linda King
 Heather Klare
 Mimi & Bob Krier



**The story of Family Promise Metrowest
 helps show donors who have the ability
 to help the needs and great work being
 done here in the MetroWest.**

**—Judith Salerno, Executive Director
 Foundation for Metrowest**



Marci Landis
 Liberty Mutual Insurance
 Lynn Evans, Wellesley
 Sarah Mabrouk
 Donna & Karen MacLeod
 Richard & Laura Malnight
 Jed & Pam McGarry
 John & Cynthia McReynolds
 Memorial Congregational Church,
 Sudbury
 Elaine Mittell
 Cindy & Paul Mortali
 Wendy & Adam Newman
 OnIT Technology Solutions
 Caren & Randy Parker
 Peace Lutheran Church, Wayland*
 Pilgrim Church, Sherborn
 Mary & Russell Pollard
 Presbyterian Church, Sudbury
 Syed Razvi
 Tammy & David Retalic
 David Richer*
 Robert F. Hunsicker Foundation
 Christine Roberts
 Roche Bros., Inc.
 Rotary Club of Natick
 Philip Ruedi
 Karl Schlemmer
 Greg & Mary Lynn Schwietz
 Juliet Seaberg
 Ann Skipper
 Smith, Sullivan & Brown, PC
 Scott & Lori Stanney*
 Lucy Sur*
 The Tobin School
 Elyse Trockman
 Kimberly & Rob Tyler*
 Kirsty & Greg Vitarelli
 Thomas & Andrea Ward
 Wegmans Food Markets
 Lisa Wendell & Kenneth Fishman*
 Stacey White

\$100-\$499

Farah Abbas
 Michelle Adams
 Robert & Dalila Adamson
 Mary Ahern
 Christina Aiello

Anne Aisenberg
 Shezad Akram
 Ellen Alfaro
 Femina Ali
 Mervat Ali
 Sonny Ali & Nadia Haque
 Tatiana Alicea
 David Allen
 Diane & Bill Allen
 Donna Allen
 Jacqueline Allen
 Nicole Allen
 Jeff Allstadt
 Amazon Smile
 Nancy Anas
 Beverly Anderson
 Pamela Anderson
 Thomas & Alisa Andrews
 David & Alexandra Andrews
 Anonymous*
 Phyllis Antalek & Joan Hellmuth
 Douglas & Michelle Arbeely
 Susan & Frank Armo
 Noel Atamian
 Lee & Marge Atamian
 Lorraine Attridge
 Eunice Atwood*
 Betty Aucoin
 Shawn & Michael Auler
 Iris Bagwell
 Ann Baisley
 Jill Baker
 Bruce Baker
 John & Deborah Baldwin
 Jay & Ricky Ball
 Saadia Baloch
 Aijaz & Sidrah Baloch
 Shaheen Baloch
 Ellen Banthin
 Bar Down Landscaping
 Paul & Linda Barnard
 Pamela Bathen
 Jessica Baur
 Doug & Terri Beckerman
 Edward & Diane Bedrosian
 Carole Osterer Bellman
 Beth Benjamin



**The reminders
 of what really
 matters...family,
 home, a warm meal,
 the innocent smile
 of a child...I feel
 that every time I
 step into the new
 Day Center.**

**—Donna Angelico
 Board Chair & Donor**



Craig Bentley
 Kathy McGraw Bentley
 Patricia Birmingham
 Lorrie & Michael Berry
 Ryan Best
 Fred Beyrouthey
 Paul Bigwood
 Diane Black
 Casey Blake
 Peter Blanshan
 Paula & Herman Blumberg
 Byrna Bornstein
 Jane Brand
 Carol & Stephen Brayman
 Ruth & Wilfred Breden
 Pamela Broderick
 Katie Brodrick
 Matthew Bross
 Jim Brouillard
 Charles Brown
 Daniel Brown
 Striker Brown
 Rosa Buffone
 Lana Bunce
 Bill & Beth Bunce-Bates
 Rebecca & Eli Burstein
 Mimi Burstein
 Amanda Bush
 Joe & Jean Bussichella



Family Promise Metrowest is vital to strengthening the communities that we all call home. We are only as strong as each individual who may be experiencing a difficult time in their lives.

**—Susan M. Paley
VP Community Relations, The Village Bank**



Gillian Butchman
Shawn & Sarah Byrne
The Campbell Family
Bev & John Canning
Kim & Kevin Canning
James Carney
Lynn Carriker
Julie Carson
Jill Carter
Mark & Samantha Carter
William & Heather Castle
Amy Catlin
Lisa & Alvin Chan
Phyllis & Joseph Chartor*
Stuart & Ellen Chasen
Fariha & Gulraiz Chaudry
David & Bridget Chiaruttini
Fehmida Chipty
Catherine Chung
Gregory Clark
Suzanne Clement
Jim Coady
Susan & Scott Cohen
Ginny & Kenneth Colburn
Darlene Colonna
Michael & Christina Connolly
Jennifer Connors
AnneMarie Connors
Joanna Mongiardo Coogan
Rita Corey
Debra Cox
John & Peggy Cross
Dan Crossley

Sheila & Carrington Crothers
Helen & Thomas Cuddy
Katharine Cunningham
Jackie & Mark Cunningham-Hill
Michelle Currier
Janet Curry
Lynn Dahlman
Laura Dailey
Claudia Darmofal
Diane Dautoff
Dana Davis
Lori & Scott Davis*
Caroline Schaefer Del Col
Tia Dennis
Matthew Desutter & Donna Paglia
Rick & Dana Devereux
Amanda & Willard Dickerson
Nancy DiMatteo*
Ed & Sue Doherty
Steve & Donna Doody
Doug Dolgov
Dover Rug & Home
Dr. John & Julie Dowd
Angela Doyle
David & Janet Drake
Pat Drake
Michelle Drolet
Janet & George Drummey
Alexander & Jennifer Dube
Elana Duca
Karen Dumaine
Pam Dunham
Sarah Dupre-Healy

Kate Durrane
Diantha Duvall
Megan Dyer
Courtney & Eric Edman
David Eells
Carrie & Christian Ehrbar
Marwa Eid
Marilyn Ellsworth
Carol Esbig
Susan Evans*
Angela Evers
Martha Fagan & Donald Benovitz
Fair & Yeager Insurance Agency
Deborah Falk
The Family Pet Hospital
Tina Fan-Seto
Federated Church of Ashland
Maura Feheley
Vance Fernandez
Robert Festa
Nora Field
Tammy Fields
First Church of Christ, Scientist, Natick
First Parish Unitarian Universalist, Framingham
First Parish Unitarian Universalist, Medfield
Kenneth & Lisa Fishman
Fisk Memorial United Methodist Church, Natick
Neal & Barbara Fitzpatrick
Judy Fleming
Steve & Carolee Fogg
Patrick Forshner
Annelise Fortier
Matt Fragomeni
Brian & Shannah Frambes
Framingham Friends Meeting
Nick Francis
Vauntina & Andrew Franklin
Katie & Michael Frassinelli
Ilyssa & Michael Frey
Martha Frigoletto
Debbie & Dom Friscino
Greta Fruhan
Roseann & Doug Furbush
Lisa Fusaro
Philippe & Margaret Gabriel
Cathy Gallagher

Jill & Jay Galvin
Erin Gammon
Bob & Nancy Ganley
Aileen Gardner
Heather Garni
Geoffrey Gass
Maura Gaughan
Kate Gebski
Susan Gibbons
David & Janet Giele
Whitney & William Gilchrist
Leo Gleason
Joyce & Neil Gordon
Christine Goss*
Jack Gould
Bonnie Gouveia
Jeremy & John Gransky
Christine Gray*
Ben Greenberg*
Glenn Greenberg
Megan & Tyler Griffith
Rick Griffith & Louise Tharrett
Rachel Gubbay
Sherry & Larry Guzman
Sylvia Haber
Susan Hacker-Wolf
John Haggerty
Alia Haider
Scott & Laurie Haig
Kathy Halamka
Susan & John Haley
Beth Anne Halpert
Kelsey Hampton
John & Linda Hampton
Nisreen Harianawala
Charlotte Harrington
Amy Harris
Kathryn Harris
Myra Hart
Gardi & Bruce Hauck*
Betsy Hauser*
Roberta Hayes
Jenni & Bill Haynes
Aline Haynes
Karen Head
Hilding & Jane Hedberg
Donald & Beth Henrich
Lori Henschen
Highland Street Foundation

Michael Hill
Phyllis Hinsey
Dianne & David Hoaglin
Adam Hoffman
Susan Hollis
Nancy & Mark Holly
Barbara & Bernard Horan
Joanna Horobin
Hope Hotchkiss
Marcia & Gary Hoyt
Anne-Marie Hultin
Anna Hunnicutt
Joan Hunter
Marcey & Don Hunter*
Gregory Hunter
Edward Hurst
Sohail Husain
Tabassum Huseni
Carla Ireneus
Pete Isberg
Patricia & John Isley
Jon Jaboolian
Marc & Joanne Jacobs
Scharukh Jalisi
Carol & Joseph Jankowski
Cherine & Howard Janzen
Jesamondo Salon & Spa
John Everett & Sons
Joanne Jones
Julie Jones
Paul & Lena Joseph
Robin Junkins & Mark Maiden*
Paula Kane
Arline Kardasis
Verna & Bob Karrfalt
Faridah Kassim
Katherine & John Kaufmann
Donna Kell
Trish Kelliher
Karen & Michael Kelly
Suzanne Kennan
Greg Kennan
Armen & Kate Khachaturian
Adnan Khalid
Hajra & Fahd Khan
Jawad Khan
Amna & Amin Khan
Nancy & Edward Kingsbury
Sharon Kirby

Eric & Kathleen Kirleis
James & Julie Kittler
Melisa Kjellander
Katrina Klaus
Kristina Kloman
Susanne Kluitmans
Julie Kniznik
Hillary Kohler
Christine Konys
Cole Kopacek
Donna & Eric Korb
Polly Kornblith
Djuro & Jelena Kovrlja
Dolores Krasner
Donald Kraus
Debbi Kravetz
Kurt & Sonja Kreh
Peter Lacaillade
Missy LaCapra
Catherine LaFave
Olivia Lafrate
Ann & Tom Lally
Jayne & Marc Lampert
Elizabeth & Theodore Lampros
Ingrid & Gene Lancaster



FPM provides an important safety net for families, allowing them to help themselves, which provides them with a tremendous sense of accomplishment as they work their way toward financial independence.

**—Mitch Coddington
Donor**



Karen & Matt Langweber
 Janet Lawson
 Carolyn Lee
 Debbie & Tom Lee
 Bev & Mark Lenci
 Whitney Leslie
 Loraine & Jeffrey Levy
 Nancy & Barry Levy
 Mark & Carolyn Libby
 Jean Linke
 Sheldon & Karin Lockman
 James & Alice Loehlin
 Loker Elementary School, Wayland
 David Lombardo*
 Matthew Lombardo*
 Cara McCauley Lorion
 Virginia & Johnny Loyd
 Elisabeth Luke
 Isabel Lyndon
 Marc MacDonald
 Peter MacLeod
 Rod & Marcia MacLeod
 Shamila & Ziad Malik
 Sue & Ellen Mandell
 Ardis Manelis
 Karishma Manzur
 Melissa Marrama
 Gail Martin
 Jacob & Elizabeth Martin
 Sue & Steve Mascioli
 Busi & Tamara Maswoswe
 Janet Matthies
 Susan & Gerald Mazor
 Tim McCleary
 Alison & Myles McCormick
 Cam McCormick
 Jerome McCue
 Matthew & Paula Passi McCue
 Andrea McDonald
 Barbara McDonald
 Deborah McElroy
 Michael McGrath
 Amy McGregor-Radin
 Lindsay & Jimmy McGuinness
 Joe & Dee Meaney
 Safdar Medina
 Mark Medvin
 John Melin

Mera Consulting Group
 Candace Merrick
 Al & Susan Merson
 James & Sandra Metcalf
 MetroWest Brits
 Jennifer & Travis Metz
 Michael Meurant
 Christopher & Valentina Midura
 Gail Mills
 Catherine & Peter Mitchell
 Marge Mitchell
 Simona Mocuta
 Elizabeth Moder
 Whitney Mooney
 Jessica Mooraj
 Nancy Moore
 Mr. & Mrs. Moorhead
 Marcia Morin
 Jane Morris
 Carole Morse
 Joshua Morse
 Most Precious Blood Church,
 Dover*
 Sandra & Michael Moumoutjis*
 Helen Murphy
 Lori Murphy & Greg Young*
 Lawrence Murphy
 Mike Murphy
 Martha Murray
 Steven Murray
 Margaret Naeser
 Dorothy & Jim Nail
 Susan Naja

Huma Najam
 Jean Nam
 Laura Nardone
 Lynne Nemerowski
 Lucille & Bill Nethercote*
 Steven & Marti Neugarten
 Dan Newman
 Joyce Newton
 Mark & Laura Niedermeyer
 Jonathan Noel
 Herb Nolan
 Kellye O'Brien
 Margaret O'Brien
 Anne O'Connell
 John O'Laughlin Jr.
 David & Christina Oliver
 Kisten Olson
 Sean & Janna O'Neill
 Kevin O'Regan
 David & Deborah Osborn
 Joshua & Jeanne Williamson
 Ostroff
 David & Laurie Otten
 Mark Owen
 Kyla Pan
 Yan Pan
 Noorjahan Panjwani
 Lisa Pantaleo
 Judy Parant
 Bilkish Patel
 Nicole & Daniel Patience
 Kevin Pawl
 Jennifer Peace



I donate to Family Promise because I see acts of kindness being played out in unique ways. The summation of all shared talents creates something bigger than a single person.

**—Tammy Retalic
 Board Member & Donor**



Lucy Pease
 Annette Pein
 Robin Perera
 Jennifer Perkin
 Via Perkins
 Mary Beth Persons
 Donald & Judith Peters
 Paul & Carol Peterson
 Salli Peterson
 Stanley & Cyndy Piekos
 Adriano Pimenta
 Elaine Pipes
 Alice Polley
 Izola Porter
 Prana Center
 Michael & Wendy Price
 Imrana Qawi
 Laura Qureshi
 Gwyn & Robert Ramage
 Rashmi Ramaswamy
 Curtis Ranta
 Rebecca Rathbun
 Mahitha & Uma Reddy
 Ron & Barbara Reed
 Dianne & Bill Rees
 Paul & Cilla Reising
 Walter Reuning
 Mark & Christina Reynolds
 Shadman Riaz
 Deborah Riester
 Karen & Ron Riggert
 Patrica & Paul Riseman
 Cally Ritter
 Lisa & Rick Rizoli
 Annette Roberts
 Kerry Roberts
 Lauren Roberts
 Laurie Robinson
 Peter & Lisa Roblin
 Tom & Kim Rocco
 Jane & Carl Roddy
 Brian Roessler
 Jaime Rogers
 Justin Rohn
 Beth Rosen
 Mark Rosen
 Amy Rossi
 Rowan Family Foundation

Kate Rushford
 Ward Russell
 Pete & Linda Russo
 Matthew Ruston
 Rev. Jason & Kelly Rutherford*
 Jon & Melissa Rutherford
 Lisa Saab-Colby
 Nadia & Carl Salerno
 Kate & Scott Salley
 Doug & Maria Salomao-Schmidt
 Elizabeth Sandeman
 Charlotte Sanner
 Cheryl Savit
 Lynn Scheller
 John & Lily Schlafer
 Donna Scott
 Daniel Seaman
 Paul Shackford
 Robin & Afroze Shaikh
 Heather & Robert Shanahan
 Rabi Shanshiry
 Susan Shaver
 Gail Shears
 Rizwan & Ayesha Sheikh
 Jeanne Sherlock
 Brigham Shields
 Linda Shih
 Mawya Shocair
 Sally Siciliano
 Afreen Siddiqui
 Haroon Siddiqui
 Irshad & Nafisa Sideeka
 Mary & Andy Siegel
 John & Toni Jean Siliski
 Marcia Testa Simonson
 Simply Done
 Michael & Alisa Skatrud
 Robert Slowik
 Sandra Smith
 Sybil & Don Smith
 Marc Soloway
 Trudy & Stephen Sonis
 Sons of AMVETS Post 79
 Spavia Day Spa
 Lynda Sperry
 Mary Anne Squire
 Bev & Larry St. Clair

St. Theresa's Catholic Church,
 Sherborn*
 Margie & Allen Steere
 Candace Steingisser
 Diane Stempel
 Karen & Errol Stevens
 Susan Stevens



**I'm happy to
 support FPM
 because results
 are measured and
 communicated. I
 can see and read
 about the progress
 the clients are able
 to achieve because
 of our support.**

**—Kelli Connors
 Volunteer & Donor**



Sylvia Stevens
 Geoffrey & Joyce Stewart
 Jackee & Neil Stigliano
 Pam & Craig Stirrat
 Arthur & Barbara Stock
 Diane Page Stone
 Betsy Strong
 Daryn Stylianopoulos
 Dennis Sugumele
 Maureen Sullivan
 Susan Sullivan
 Elizabeth & David Sutcliffe
 Marianne Swenson
 Mary Rizzo & Jay Sylva
 Marianne & Arthur Talis
 Reva Tankle
 Temple Shir Tikva
 Tenacre Country Day School

Stephanie Thompson
 Allison Tierney-Eliot
 Sarah & Stephen Tipton
 Sal Tocco
 Debbie & Bruce Tofias
 Joyce Toomre
 Lois & Bill Tougas
 Scott Tougas
 Bonnie Tragakis
 Robin Traquina
 Joseph & Marion Tratnyek
 Sally Treantos
 Mark Trone
 Karen Umbrello
 United Methodist Women of
 Community UMC
 United Methodist Women of Fisk
 Memorial UMC
 George Urban
 William & Taryn Valle
 Kenneth W. Van Blarcom,
 Auctioneer-Appraiser
 Concetta & Bruce Ventura
 Steven Verdelli
 The Village Bank
 Alison Rose Vintage
 Alexandra Vivelo
 Catherine Volic
 Aleksandra Wagner*
 Gary & Kathleen Walker
 Courtney Wall
 Barbara Ward
 Wayland Animal Clinic
 Daniel & Kristine Weddle
 Bette Ann Weiner
 Scott Wells
 Jan Westerhoff
 Christine Weston
 Gail Weston-Roberts
 Christina Wheeler
 Mark & Kristen Whitaker
 Dana White
 Julie White
 John & Dorothy Whitlock
 Sue Wilcove & Sandy Moskovitz*
 Laura Wilcox
 Sarah & Landen Williams
 Kimberly & Donald Williamson
 Brandon Wilson
 Deborah Winnick



**Supporting community is important to
 our family. We are all strengthened by
 the love and kindness Family Promise
 offers to those in their programs.**

**—Tim & Jessica Collins
 Donors**



Chris & Craig Winterfeldt
 Regina Wolf-Fritz
 Marilyn Wolman*
 Jodi Wood
 Kathryn & Bruce Wood
 Pauline Broman Wright
 Michael Yeh
 Alicia Yeh*
 Lilian Yengi
 Julie & Aram Zadow
 Barbara & James Zebrowski
 Raymond & Kathie Zeman
 Carolyn Zern
 Farhana Zia
 Cathy Zimmerman
 Drew Zinman
 Kristine Zizic
 Aileen Zogby

Pro-Bono Service Donors

Aaron Washington Photography
 Goulston & Storrs PC
 Perpetuart

Matching Gift Companies

AAFCPAs
 Albert Risk Management
 Bank of America
 Bose
 Citizens Bank
 Dell
 Eastern Bank
 FM Global
 General Electric
 Liberty Mutual Insurance
 The MathWorks, Inc.
 Microsoft
 ORIX
 Salesforce
 Walmart

** 2018 contributor to our "A Place to Call Home" capital campaign.*

*We also extend our gratitude to the 1,088 additional donors who
 donated under \$100 in 2018. We are thankful for each one of you!*

*Every effort has been made to ensure the accuracy of this list. We
 apologize for any errors or omissions. Please contact us at
admin@familypromisemetrowest.org with corrections.*

Our Staff

Susan Crossley, Executive Director
Carole Brodrick, Director of Development
Amanda Elkin, Assistant Director
Judy Mongiardo, Network Coordinator
Eliz Portal, LIFE Program Coordinator
Stephanie Di Dio, Shelter & TLP Case Manager

Tamara Nevens, Administrative Assistant
Jerry Precious, Van Driver
Sharon Mann, Van Driver
Barbara Ward, Van Driver
Melissa Nuñez, Van Driver

Our Board of Directors

Donna Angelico, Chair
Director of Talent Management, AAFCPAs

Ghazala Alam, MD, Vice Chair (retired 2018)
Physician/Owner, Drum Hill Primary Care

Jim Roberts, Treasurer
Vice President of Compliance, Needham Bank

Lecia Shronce, Clerk
Corporate EHS Administrator, J.F. White Contracting

Emmanuel Badoo
Senior Product Manager, Salesforce

Heather Connolly
Herb Connolly Auto Group

Harriett Hallagan
Retired Early Childhood Educator

Yusuf Kalule
Credentialing Specialist, McKesson Technologies

Jeff Kinney
Regional Vice President, Wells Fargo Bank

Robert Murray
Founder & CEO, Taxbridge Financial Group, Inc.

Maureen Nguyen
VP of Development, Massachusetts Historical Society

Tammy Retalic
Chief Nursing Officer and VP of Patient Care Services,
Hebrew SeniorLife

Reverend Jason Rutherford
Pastor, First Baptist Church Framingham

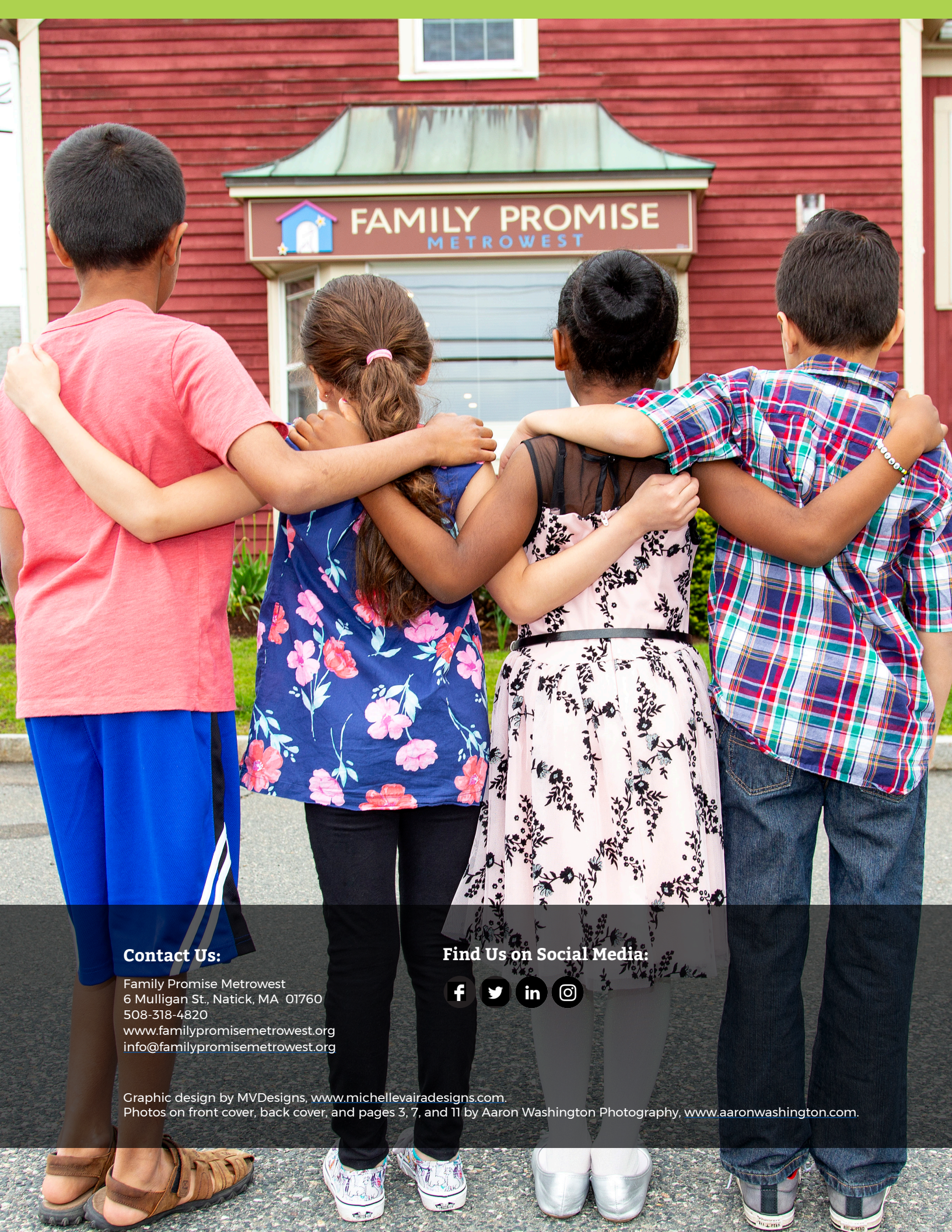
Dan Seaman
CPA, AAFCPAs

Kimberly Tyler (retired 2018)
Accountant II, MutualOne Bank

Carol Virshbo
Retired Regional Sales Manager, GE Healthcare

Maureen Wooster
Retired HR Director





Contact Us:

Family Promise Metrowest
6 Mulligan St., Natick, MA 01760
508-318-4820
www.familypromisemetrowest.org
info@familypromisemetrowest.org

Find Us on Social Media:



Graphic design by MVDesigns, www.michellelvaairadesigns.com.

Photos on front cover, back cover, and pages 3, 7, and 11 by Aaron Washington Photography, www.aaronwashington.com.