



FAMILY
PROMISE
METROWEST

ANNUAL REPORT

20
17

TABLE OF CONTENTS

Mission & Story	3
Letter from the Chair	4
Board & Staff	5
Family Spotlight	6
LIFE Program Launches	7
Day Center: A New Home for Everyone	8
Our Congregations	10
Volunteer Story	11
Our Community Partners	12
Events	13
Our Impact	14
Our Financials	16
Our Donors	18

MISSION & STORY

OUR MISSION

To transform the lives of families with children who are homeless by mobilizing a diverse community to provide shelter, education, and comprehensive support.



Former guest Mona and her children celebrate with Family Promise Metrowest staff on move-in day for their new home, built by Habitat for Humanity.

OUR STORY

The idea for Family Promise Metrowest (FPM) was conceived by members of the Wellesley Congregational Village Church and Christ Lutheran Church of Natick in 2003. The collective vision became a reality when the network welcomed its first family into shelter in October of 2008. FPM is now one of over 200 affiliates of Family Promise National across the country.

Our concept is simple. We believe motivated, hard-working families can move out of homelessness and poverty if they are given the encouragement, guidance, and resources to reach their goals. As a community, we all take a role in addressing this issue.

For our shelter, host congregations open their doors one week at a time, three to four weeks a year to provide housing by converting classrooms into bedrooms for our families. A growing network of over 3,000 trained volunteers from congregations and the greater community supply meals and staff the shelter, embracing our families with a network of people who care.

Yet we are much more than a shelter. Our professional staff provides intensive support in accessing community resources and setting goals with families to address the root causes of their homelessness.

Over the years we have also expanded our programming to meet the needs of our families. In 2013, we introduced a Transitional Living program to ensure sustainability by supporting families for one year after leaving shelter. In 2015, the Steps to Success program was launched to provide educational and career-building opportunities in order to maximize family earnings. In 2017, our LIFE program was initiated to prevent evictions by providing subsidies for rent in arrears, advocacy with landlords, and case management to prevent families from becoming homeless.

Together, our passionate community of volunteers and professional staff inspire our families to persevere and dare to dream for a better future. ♦



LETTER FROM THE CHAIR

Dear Friends,

This year began a new chapter for Family Promise Metrowest with the purchase of a beautiful Day Center for our families, staff, and community. Our move to a new building was the culmination of thoughtful, strategic planning aimed at providing a dignified space for our current families while also enriching our collaborations with other organizations in the community in order to bring our programs to even more families.

At the time of writing this letter, we have moved into our new home and are excited to now explore the question, “What’s next?”

We have already begun to serve more families through our new LIFE program, a homelessness prevention program established in December 2017. In our new meeting room, we are holding monthly LIFE program meetings with guest speakers presenting topics that educate and empower our families. With capacity for up to 35 participants, we can also invite former FPM guests to the presentations, giving us an opportunity to reconnect while also enabling LIFE participants to form relationships with families who have moved through similar struggles and are now living in the community.

With this new meeting space, we are also reaching out to other nonprofits in the area to develop and further our community collaborations. For example, we are looking forward to the possibility of joint staff trainings or sharing our presentations with families

served by other organizations. We will also now be hosting adult and teen volunteer trainings here at the Day Center and planning other educational events with the broader community. The issue of family homelessness is complex, and we are excited at the prospect of hosting seminars to educate our community about both the challenges and creative solutions to this issue. The options for how we can use the wonderful new space are endless.

Our fully stocked kitchen also provides a venue for volunteers who enjoy cooking. Colleagues from your business, book club, or community group can now come to our new home and prepare a meal on-site for our families. The kitchen also offers ample space for cooking or nutrition classes for our guests, offering resources for healthy eating on a limited budget.

We are so grateful for our new home and all of the potential it offers, not only to our families and staff, but to the wider community and the many families we have yet to serve.

With gratitude,

Donna Angelico
Chair, Board of Directors

2017 Board of Directors

Donna Angelico, Chair

Ghazala Alam, Vice Chair

Jim Roberts, Treasurer

Lecia Shronce, Clerk

Emmanuel Badoo

Yusuf Kalule

Kathy McGraw-Bentley

Robert Murray

Jason Rutherford

Kimberly Tyler

Carol Virshbo

Maureen Wooster

2017 Staff

Sue Crossley, Executive Director

Carole Brodrick, Director of Development

Amy Catlin, Office Manager

Amanda Elkin, Steps to Success Coordinator

Judy Mongiardo, Network Coordinator

Eliz Portal, Transitional Living Case Manager

Martha Williams, Shelter Case Manager

*Van Drivers: Beth Gillece-Castro, Sharon Mann, Melissa Nuñez,
Dawna Phillips, Jerry Precious, Barbara Ward*

FAMILY SPOTLIGHT

People often ask us who we serve in our shelter. While we are purposefully broad in evaluating families for our program, the following eligibility criteria guide our selection:

- The family must include at least one child under the age of 18.
- Parents must be over the age of 18 (we do not serve unaccompanied youth).
- One- or two-parent families of all genders are welcome, as are grandparents who have been living as part of the nuclear family.
- Parents must be working or willing to obtain employment (although we do not have an income limit).
- The family must be currently homeless or at immediate risk of homelessness. If a family is living temporarily with friends or family in violation of a lease, we consider them homeless.

While all of these criteria are important, the most critical trait we look for when selecting a new family is that they are motivated to make change in their lives.

So when a family like Melissa and her children ask for help, we welcome them with open arms. When Melissa came to us in March 2017, she was working two jobs. She and her children had been living in the same home for over seven years, but due to a recent flood were suddenly homeless. She had applied for state shelter but was over income and thus ineligible.

From the beginning, Melissa epitomized what we look for in families with her persistence and laser focus on reaching her goals. We assisted her in finding an affordable apartment in Framingham where she remains today. She has continued with her two jobs and also now works part-time for us as a weekend van driver, adding her warm and hardworking presence to our staff and offering support and encouragement to our families. Melissa also speaks often in the community, giving presentations about Family Promise Metrowest and the impact we made on her life.

While we are proud of our role in transforming Melissa's life, we are inspired by her tenacity and know that her motivation was essential to her success. This is how we work together. This is Family Promise Metrowest. ♦



LIFE PROGRAM LAUNCHES



In 2017, we received 346 calls from families in the community who were asking about shelter. At first glance, we thought all of the families were homeless, yet when we took a closer look, many were at risk of eviction but still in housing. It begged the question: Rather than wait for these families to become eligible for our shelter, could we help them avoid becoming homeless in the first place?

Our answer was a resounding YES. And with that clarity, we began developing our Local Initiative for Family Empowerment (LIFE) program, modeled after A Lift Up, a successful homelessness prevention program at City Mission in Boston. In our program design, we included financial resources to subsidize rent in arrears; assistance in advocating with landlords; individualized case management; and monthly group presentations. We quickly realized

that adding this program to our spectrum of services would allow us to serve more families, prevent the stress of entering a shelter, and keep families from having to explain an eviction to future landlords.

The plan was to develop the program and accept the first family after we moved into the new Day Center in early 2018. However, in December 2017 after presenting at one of our congregations, our Executive Director Sue was approached by a woman in the crowd. She asked to speak privately and proceeded to explain that she was in the process of being evicted and wanted to know if we could help.

As they talked, Sue got to know Kristen, a hard-working, single mom who was behind in her rent. Although she had an excellent job and two master's degrees, her life had changed, and she had only one income in her home instead of two. Her son also had special needs and the \$100/session speech and language therapy he required was not covered by insurance. It was easy to understand what was happening.

We contacted her landlord who affirmed that she had been an excellent tenant until recently and he'd love her to stay if we could help with the rent in arrears. Confident she could sustain her expenses on her current income, we quickly subsidized her back rent in order to stabilize her housing and she began her case management and monthly trainings.

Over the past six months with her case manager, Kristen accessed resources to help pay for her son's therapies and decided to move to a new apartment with a lower rent. Without an eviction on her record, she was welcomed by a new landlord.

And this spring instead of struggling in shelter, she trained and ran the Boston Marathon. With a successful finish under her belt, she plans to run for Family Promise Metrowest next year and give back to other families in need. ♦

DAY CENTER

A New Home for Everyone



In April, a new family came to our shelter for an interview. The questions we asked were the ones we always pose; the family's needs were familiar, and as urgent as ever. But something was profoundly different this time: It was our very first interview in our new building. After we spoke, we gave her a tour of the Day Center, showing her our spacious kitchen, private meeting rooms, three full bathrooms, and comfortable living area. Rather than apologizing for our cramped space and limited facilities, we glowed with pride at the comfort and support we had to offer her family. At the end when we asked if she had any questions, she spoke briefly to her interpreter. The interpreter smiled and turned to us: "She hopes that she can come here, to this beautiful shelter."



For those of you who don't know, in 2018 we moved into our new Day Center. As those who have visited us attest, it is more than a beautiful building; it is now a true home for our families. With a purposeful design that addresses the various needs of our families, staff, and volunteers, the move has been life-changing for all.

We now have a welcoming reception area where visitors and volunteers can enter the Day Center without disturbing the families. A large meeting room offers a wonderful space for community gatherings, guest family presentations and trainings, and a place where volunteers from local schools can do projects with our children. The second floor houses offices and private work stations for our staff—ample space for everyone to work and grow.

But most importantly, the entire back of the building is for our families. Through a separate entrance, a mudroom leads into a beautiful great room with a large, fully stocked kitchen. Families now have space for private meetings, a dedicated area for studying or job searching, and a quiet room for infants and

toddlers to nap. A spacious, finished basement houses laundry facilities, extra storage space, and an open room where children can play on rainy days. Simply said, it feels like home.

In 2017 we began a capital campaign, “A Place to Call Home,” and by December 31st had raised \$672,217 of the \$1,200,000 goal. The funds we raise during this campaign will be used to pay off the mortgage and renovation costs and establish a building maintenance fund for the future—allowing us to focus all our other resources on serving our families. We welcome you to visit our new home and to consider joining us with a pledge as we begin this wonderful new chapter for our organization and the families we serve. ♦

OUR CONGREGATIONS

HOST

Christ Lutheran Church, Natick
Christ the King Lutheran Church, Holliston
Congregation Or Atid, Wayland
The Dover Church
Federated Church of Ashland
First Church Natick UCC
First Parish in Framingham UU
Massachusetts Conference of the United Church of Christ, Framingham
Peace Lutheran Church, Wayland
Pilgrim Church, Sherborn
St. Andrew's Episcopal Church, Framingham
St. Paul's Episcopal Church, Natick
Temple Shir Tikva, Wayland
Unitarian Universalist Area Church, Sherborn
Unitarian Universalists of Wellesley
Wellesley Village Church
Wellesley Hills Congregational
Wesley United Methodist Church, Framingham

SUPPORT

Common Street Spiritual Center, Natick
Community United Methodist Church, Wayland
Congregational Church of Needham
Congregation Beth El, Sudbury
The Eliot Church of Natick
First Baptist Church, Framingham
First Baptist Church, Needham
First Congregational Church, Holliston
First Parish UU of Medfield
The First Parish in Wayland
First United Methodist Church, Framingham
Fisk Memorial United Methodist Church, Natick
Good Shepherd Parish, Wayland
Highrock MetroWest, Needham
Holy Spirit Catholic Community, Newtonville
Islamic Center of Boston, Wayland
Memorial Congregational Church, Sudbury
Most Precious Blood Church, Dover
Newton Highlands Congregational Church
Presbyterian Church in Sudbury
St. Andrew's Episcopal Church, Wellesley
St. Bridget Parish, Framingham
St. Cecilia Parish, Ashland
St. John Lutheran Church, ELCA, Sudbury
St. Mary's Catholic Church, Holliston
St. Theresa of Lisieux Church, Sherborn
Sha'arei Shalom, Ashland
Temple Beth Elohim, Wellesley
Temple Beth Shalom, Needham
Temple Beth Torah, Holliston
The United Church of Christ in Medfield



VOLUNTEER STORY

Family Promise Metrowest Honors Our First Volunteer

As Family Promise Metrowest approaches its tenth anniversary of serving families with children who are without a home, we would like to honor the vision, dedication, and tenacity of one individual, Laraine Marthinsen, without whom this story may never have been written. A member of Natick's Christ Lutheran Church, Laraine had been disturbed by the rise of families in need in the Metrowest area in the early 2000s. After learning about the unique work and approach to addressing family homelessness developed by Family Promise in New Jersey, she decided to plant the seeds to create a Family Promise network in our region. She organized community meetings and made personal visits to congregations throughout the area, telling the Family Promise story and inviting their participation. It was a five-year process, from 2003 to 2008, to identify thirteen host congregations, find a Day Center, and raise funding. Laraine never lost hope that we would one day open our doors.

In 2008, Laraine's vision was realized. Since welcoming our very first guests, she served as the lead coordinator for Christ Lutheran Church where four times a year she oversaw the church's host week activities, organizing more than fifty volunteers to meet our guests' needs for an entire week. For ten



Laraine (left) and Judy Mongiardo, Volunteer Coordinator for Family Promise Metrowest

years, she partnered in leading "Sweet Sounds," an annual fundraising concert, which became the model for events to come.

In December 2017, Laraine stepped down as her congregation's lead coordinator. She has continued to serve as one of our essential volunteer trainers, inspiring hundreds of new volunteers to service. Thank you, Laraine, for your exemplary leadership over the past fifteen years. The organization you planted took root and is flourishing—recognized as a leader in addressing the issues of family homelessness. Together, we've made a difference in the lives of hundreds of family members, giving them hope and the means to turn their lives around. We are ever grateful! ♦



OUR COMMUNITY PARTNERS



Over the past several years we have experienced a generous increase in support from civic organizations, community and corporate grants, and private foundations, allowing us to expand programming to meet the needs of our families. Additional funds from these community partners have supported essential areas including child care, transitional living, education, and our new LIFE homelessness prevention program. The impact on our families has been exceptional and we are truly grateful.

In 2017, one of these grants included a \$100,000 award from the Cummings Foundation's \$100K for 100 program, which was the largest multi-year grant we have received to date. These funds were unrestricted and vital in supporting the infrastructure of our growing organization. The timing was especially appreciated this year with the purchase of our new Day Center. We thank the Cummings Foundation for their extraordinary generosity in supporting our families and so many others in our local community.

In addition to the monetary support we received over this last year from our community partners, we received some remarkable donations of in-kind services from local businesses. We are so grateful to the following:

- Ten Bridge Communications for donating their design services to create our fabulous new website.
- Goulston & Storrs for the many hours of legal support to assist us in purchasing our beautiful new Day Center.
- Sylvia Haber of Perpetuart who continues to use her incredible graphic design talent to create the promotional material for our events.

As we continue to expand programming for our families, we look forward to furthering our partnerships with these organizations and businesses who, large and small, are a fundamental part of Family Promise Metrowest and the future of our families. ♦



Executive Director Sue Crossley celebrates the closing of our new Day Center with community partners Susan Johnson of Middlesex Savings Bank, Dean Blackey of R.W. Holmes, and Kyle Crossley of Goulston & Storrs.



Board Member Kimberly Tyler and Mobolaji Omisore, both of MutualOne Bank, present Executive Director Sue Crossley with a generous donation to our capital campaign.

EVENTS

Our Annual Events Continue to Grow

Our 8th annual “Walk to End Homelessness” was held on April 8 at the Natick Community-Senior Center. This event has experienced incredible growth over the years, as the numbers attest. In 2010, our very first walkathon was held indoors at the Natick Mall with approximately 75 walkers who raised \$26,000 for our programs. In 2017, our walkathon featured an outdoor 5K loop through Natick with over 1,000 walkers and \$155,000 raised! Thank you to our sponsors, volunteers, and walkers for the energy and enthusiasm that made this event such a huge success.

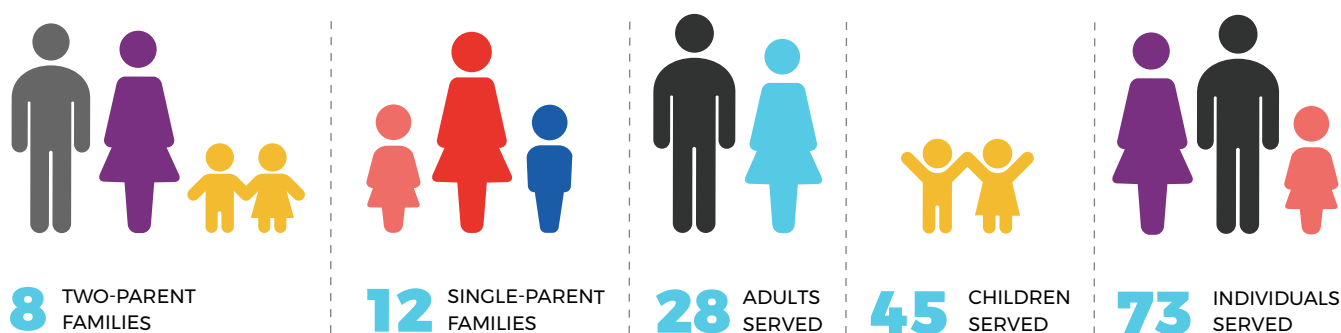
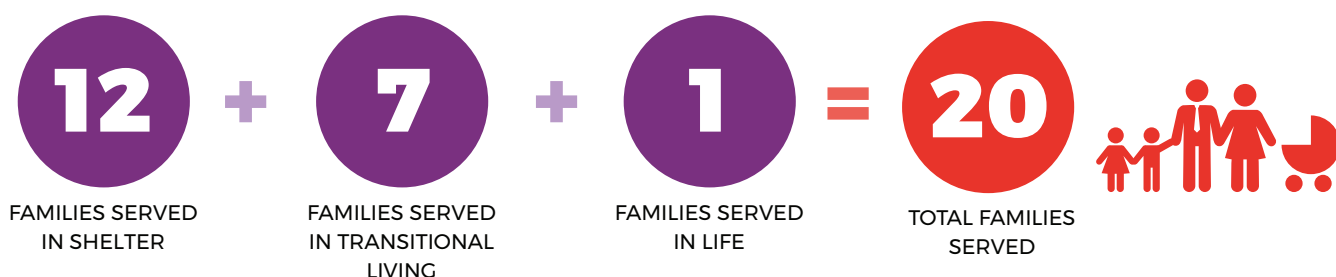
On October 28, we held our 4th annual “Keep the Promise” auction and food tasting at the Sheraton Hotel and Conference Center in Framingham. This was our first year in this larger venue, and its beautiful ballroom provided ample space for our nineteen vendors and over a hundred amazing auction items. After dinner, two of our former guests, Tiffany and Eric, shared their Family Promise Metrowest story, describing first-hand the obstacles they overcame and accomplishments they celebrated during their journey in our program. Their inspiring story illustrated the transformation that can happen when motivated, hard-working parents are given the resources and support they need to get back on their feet.

We raised a total of \$115,000 that evening, with \$23,000 donated specifically to the “A Place to Call Home” capital campaign for our new Day Center. We extend our deepest appreciation to our participating restaurants and breweries, our generous sponsors, our tireless event volunteers, and everyone who attended this wonderful, inspirational evening. We can’t wait to see you all next year! ♦



OUR IMPACT: 2017

Our Families



Steps to Success Program



Shelter Program

Health



of uninsured families secured health insurance



of children with identified special needs accessed essential resources and supports



of families with outstanding physical or mental health issues received necessary care

Finances



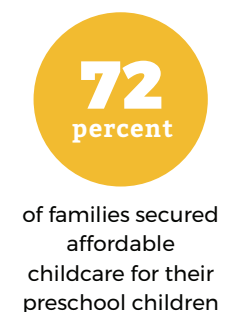
of families reached their savings goal

Housing

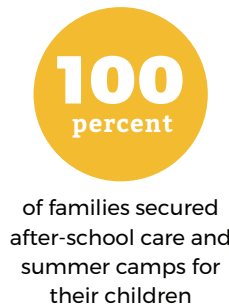


OF FAMILIES MOVED FROM SHELTER INTO AFFORDABLE COMMUNITY HOUSING

Childcare



of families secured affordable childcare for their preschool children



of families secured after-school care and summer camps for their children

Transportation



OF FAMILIES

ESTABLISHED RELIABLE TRANSPORTATION TO SUPPORT EMPLOYMENT



families

received donated cars from our network.

Transitional Living Program



of families reached their goal for debt reduction before program graduation



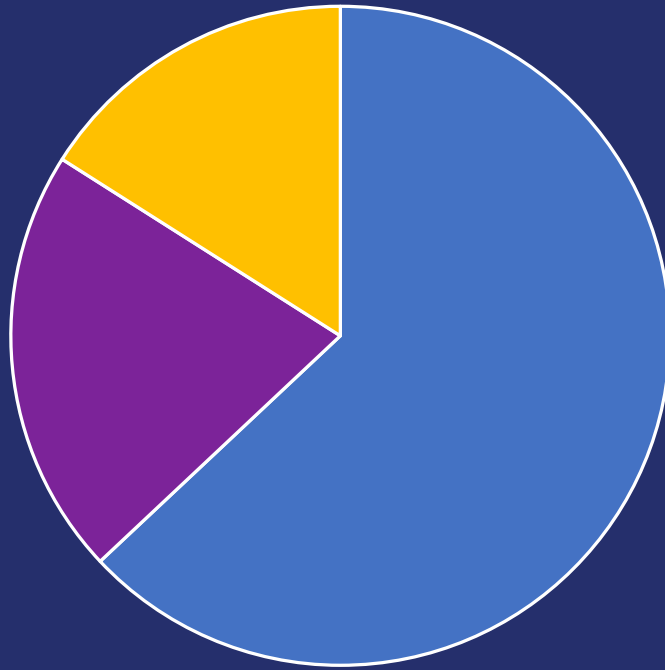
of families remained in safe, affordable housing one year after program graduation



of families maintained childcare and out-of-school programming for their children

OUR FINANCIALS

Resource Designation



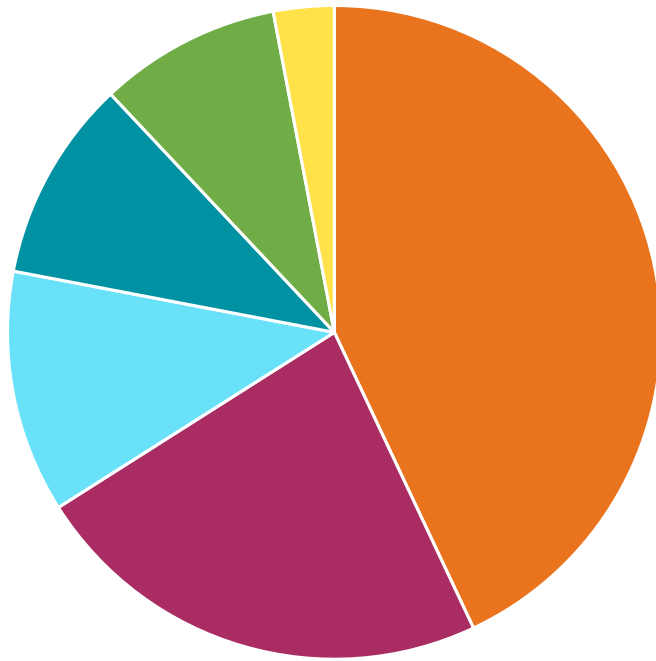
Program
\$396,108

Community Outreach & Fundraising
\$132,759

Administration
\$100,566

Total: \$629,433

Sources of Income: *Operations*



Individuals

\$324,448

Grants & Foundations

\$171,045

Congregations

\$93,374

Businesses

\$71,132

In-Kind Professional Services

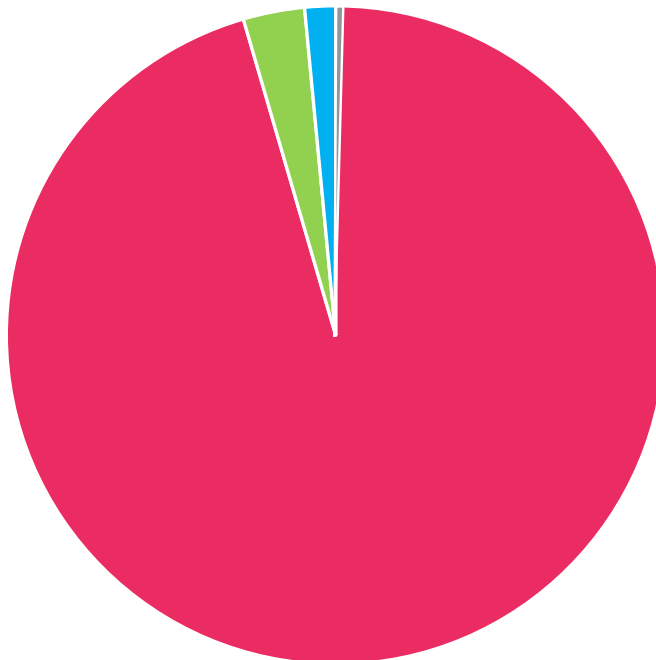
\$71,029

Other

\$19,851

Total: \$750,879

Sources of Income: *Capital Campaign*



Individuals

\$641,917

Network Congregations

\$20,300

Grants & Foundations

\$9,500

Businesses

\$500

Total: \$672,217

Includes funds received and pledged.

Total Income: \$1,423,096

OUR DONORS

\$50,000+

Leslie & Howard Appleby*
Bob Brack*

\$20,000-\$49,999

Anonymous*
Cummings Foundation
Bob & Joan Murray*
Johanna Ross*
Carol & Jay Virshbo*

\$10,000-\$19,999

Chris & Darcey Bartel*
Digital Federal Credit Union
Foundation for MetroWest
William & Katherine Green*
The Merra-Molloy Family*
Caren & Randy Parker*
Cecilia Stone
The Sudbury Foundation
Candace & Ernie Sutcliffe
TJX Foundation

\$5,000-\$9,999

Donna Angelico*
Jeff Kinney & Rebecca Bourret*
Charles & Sharon Deehan*
The Kirk Family
MetroWest Health Foundation
MutualOne Bank
MutualOne Charitable Foundation
Needham Bank
PetSmart Charities
Wheat Ridge Ministries
WinnCompanies

\$1,000-\$4,999

Ghazala Alam & Syed Hamid Nawab, PhD*
Karen & Roger Andrews
Anheuser-Busch
Anonymous*
Arbella Insurance Foundation
Avidia Bank Charitable Foundation
B.GOOD
Paul & Linda Barnard
Maryellen Behrend*
Beth Israel Deaconess Medical Center
Dean Blackey*

Veronica & Wayne Bloom
Irene Bloomstein
Tracy Boehme
Katie Brodrick*
Brookline Bank
Kerri Brown
Charles Brown*
Gary Bukuras*
Rev. Sarah Butter & Dr. John Butter
Adrienne & Michael Canning
Diana & Timothy Carroll*
Phyllis & Joseph Chartor*
Layne & Michael Clune*
D. Mitchell & Cynthia Delia Coddington
Tim & Jessica Collins
Ruth Colson
Commonwealth Cares Fund, Inc.
Kenneth & Carol Conway*
Sue Copeland
Cynthia Crino
Sue & Douglas Crossley*
Kyle & Lindsay Crossley*
Lori & Scott Davis*
DCU for Kids
Isabelle DeBear*
Steve & Donna Doody*
Barbara Dooley
Eastern Bank Charitable Foundation
East-West Enterprises Co.
Embrace Home Loans
Fannie Cox Foundation
Matt Fragomeni*
Framingham Rotary Club
Beth & Mike Frary*
Kathleen Goshgarian*
Greater Boston Real Estate Board Foundation
Alison Guzman
The Hallagan Family*
Wade & Heidi Harper*
Amanda Harrow
Charlene Harrow
Adam Hoffman
Garry & Elaine Holmes
HOPEsudbury
Jane Howard
Howard Brothers Builders, Inc.
Karen Johansen & Gardner Hendrie*
Joanne Jones

Susan Kane*
Paula Kane*
David Kelly
The Koskovich Family
Laer Realty Partners
Joyce Lafaver*
LePain Associates
The Levesque Family
Edith & Harold Lohr*
Cindy Lombardo
Hugh MacArthur
Joy & Roderick MacLeod*
Paul Marecek*
Bob & Marilyn Marlette*
JoAnne Marshall
Cathryn Marshall-Lorson & Mark Lorson
Laraine & John Marthinsen*
The MathWorks, Inc.
MetroWest Medical Center
Andrea & David Meyers
Middlesex Savings Bank
Karen & Jeff Miller
James & Judy Mongiardo*
Lori Murphy & Greg Young*
Steven & Marti Neugarten
Bruce Nolen*
NorthStar Insurance Services, Inc.
North Star Lodge A.F. & A.M.
The Okun Family
Rebecca Parkhill & Robert Willett
Stacey & Dean Peasley
Noha Ragab*
Elaine Reisman
RE/MAX
Jim & Ruth Roberts*
Aldo & Ann Rossini
Rubicon Builders
S+H Construction, Inc.
Kent Sahin
Maria Salvatore*
Sanofi Genzyme
Savers
Karl Schlemmer
Barbara Scolnick
Hope Hotchkiss & John Shea
Ryan & Tracy Sockalosky*
Ernest Steeves
Lucy Sur*
The Village Bank

*Contributor to our "A Place to Call Home" capital campaign.

Gary Walker*
 Bonita Ward
 Wellesley Bank Charitable Foundation
 Wellesley Hills Junior Women's Club
 Wells Fargo
 Steven & Meredith Wesolowski
 Westfield Capital Management
 Company
 Mercy & Bancroft Wheeler*
 Whole Foods Market
 Dr. Richard & Maureen Wooster*

\$500-\$999

Christine & Reuben Ackerman
 Bill and Joan Alfond Foundation
 Reema Alshirawi*
 Quinta Andersen
 Avidia Bank
 The Ball Family*
 Pamela Bathen
 Kimberley & David Beattie
 Bose Corporation Charitable Fund
 Ruth & Wilfred Breden*
 Andrea & Bob Brennan
 Carole & John Brodrick*
 James Bruce
 Elizabeth & John Budd*
 Carriage House at Lee's Farm
 Coldwell Banker Residential Brokerage
 Andrea DeMayo-Clancy
 Jean DePratti*
 Ed & Sue Doherty*
 Klarina & Mike Donoghue*
 The Edman Family
 ERA Key Charitable Organization, Inc.
 Wendy Evans
 Paige Fisher
 The Calvin Family*
 Donna & William Gilchrist
 Sian Godwin
 Susan & John Haley
 Kelsey Hampton*
 Gardi & Bruce Hauck*
 Highland Street Foundation
 Mary & Gene Hornsby
 Susan Johnson*
 Ann & Brian Kelly*
 Saima Khan*
 Heather Klare
 Michelle Kozin
 Don Kraus
 Mimi & Bob Krier
 Andre Lamontagne*

John Leigh
 Liberty Mutual Insurance
 Barbara Lovely-Lin
 Molly Lynch*
 Sarah Mabrouk
 Richard & Laura Malnight
 Lynn & Alan Marks*
 Geraldine & Pamela McGarry
 Michael McMahon
 Ivette Mesmar*
 Middlesex Savings Bank
 Whitney Mooney
 Jose & Polina Moraes
 Dara Munoz
 Lucille Nethercote*
 Margaret O'Brien*
 Patrick Paquet
 Mary & Russell Pollard*
 Primrose School of Natick
 Realty Executives Boston West
 David Richer
 Marjorie Roberson
 Roche Bros., Inc.
 Jeff & Kathy Rodman*
 Lecia C. Shronce*
 Bob & Donna Simek
 Ann Skipper
 Sons of AMVETS Post 89
 Scott & Lori Stanney*
 Surdna Foundation
 Elizabeth & David Sutcliffe*
 Sylvia & Mitchell Haber
 The Tobin School
 Susan Turner
 Dr. Shared Wagle*
 Dudley & Sally Willis

\$100-\$499

Farah Abbas
 Peter & Jill Abend*
 Bobby & Mike Abrams
 Michelle Adams
 Betty Aglio
 Mary Ahern
 Treseanne Ainsworth
 David Allen
 Jacqueline Allen
 Donna Allen
 Scott Allen
 Amazon Smile
 W. Banks Anderson
 Ron & Barbara Anderson
 Thomas & Alisa Andrews*

Anonymous*
 Bob & Nancy Anthony
 The Armo Family
 Art & Judy Arnold
 Judy Artley & CT Moses
 Nancy Astephen
 Mish & Wes Atamian
 Eunice Atwood*
 Betty Aucoin
 Shawn & Michael Auler
 Zahra Ayub
 Douglas & Veronica Bacon
 Frederico Bairos
 Ann Bakas
 Jill Baker
 Gretchen Baker Smith & Buddy Smith
 Aijaz Baloch
 Marcia Banderet
 Mary & Timothy Barber
 Maya Barnes
 The Barrera Family
 Laura Basili
 Tracy Beck
 The Beckerman Family
 John & Sara Beggans*
 Catherine Belden
 Beth Benjamin
 Patricia Bergevine
 Kathleen Berner
 Pamela Berube
 Fred Beyrouthey
 Paul Bigwood
 Kol Birke
 Nancy Blaisdell
 Julia Blake*
 Margaret & David Blakelock
 Sheila Boardman*
 Ralf Boeck
 Joshua Bonn
 Maria Bowen
 Gina & Rob Bradley
 Laura Brown-MacKinnon
 Cynthia & James Bruce
 Janet Buchwald & Joel Moskowitz
 Joyce Bukaty
 Anita Bunce
 Lana Bunce
 Bill & Beth Bunce-Bates
 Barbara & Fred Bunger
 Linda Burgoon
 Stephen Burke
 Gerard Burke
 Brett & Lisbeth Burns*

Colleen Burt
 Krista Busnach
 Joe & Jean Bussichella
 Gillian Butchman
 Shawn & Sarah Byrne*
 Susan Calcio
 Anthony Calilung
 Bev & John Canning
 Robert Caplin
 Thomas & Susan Carney
 The Carson Family
 Mark & Samantha Carter*
 Lisa & Magann Casavant
 William & Heather Castle*
 Linda Champion
 The Chan Family*
 Sultana Chanikian
 Suzanne Chapman
 Charles River Apparel
 Helen Chen
 Carol Chirico
 Catherine Chung
 Brian Ciaccio
 Tara Ciongoli*
 Sue Clement & Jim Doyle
 Dina Cohen
 Gretchen Colby
 John & Joan Collier
 George Conant
 Julie Conlin
 AnneMarie Connors
 Rita Corey
 Robert Corolla
 Donald Cotton
 Anna Cowen
 Debra Cox
 Cynthia Crohan
 John & Peggy Cross
 Margaret Cross
 W. Peter & Joyce Crossley
 Sheila & Carrington Crothers
 Karen Cunningham
 JoAnne & Fred Cunningham
 Patricia Curry
 Paula Curtis
 The Curtis Family
 Brendan Daly
 Jennifer D'Antonio
 Claudia Darmofal
 Elisabeth Gale Davis
 Caroline Schaefer Del Col*
 Tia Dennis
 Edward Dennison
 Susan DeRoche*
 Matthew Desutter & Donna Paglia*
 Michele & Scott Devens
 Rick & Dana Devereux

Vania Diaz
 Larry Dick & Lucia Frenkel
 Amanda & Burley Dickerson
 Nancy DiMatteo
 Dimensions 3D
 Katy Dirks
 Lois & Paul Doerr
 Eric Doody
 Jane & Alan Dossett
 Matthew Douglas
 Stacie Dowling
 Ginny Doxsey
 Pat Drake
 David & Janet Drake
 Ritta Dreier
 The Dressing Well Charitable
 Foundation
 Janet Drummey
 Alexander & Jennifer Dube*
 Kristen Duffy
 Stephen & Patricia Dufour*
 Karen Dumaine*
 George Dummer
 Pam Dunham*
 Julie & Mike Durbin
 Charles Eastwood
 Linda & Steven Eckles
 Carrie & Christian Ehrbar
 Doug & Christina Eisenstein
 Eliot Center for Health & Rehabilitation
 Pauline Elkin
 Randall & Amanda Elkin
 Kate Ellis
 Dr. Charles & Mary Ellis
 Marilyn Ellsworth
 Warren & Elaine Englund
 Susan Evans*
 Emily Eveleth & Penn Young
 Emily Fagan
 Fair & Yeager Insurance Agency
 Eric Falcone
 The Family Pet Hospital
 Chris Farrell
 Elaine Feld
 Peter Fergusson
 Vance Fernandez
 Robert & Deirdre Festa
 Tammy Fields
 Norma Fink*
 Daniel & Penelope Fireman*
 Kenneth Fishman
 Neal & Barbara Fitzpatrick
 Danae & John Foley*
 Annelise Fortier & Douglas Atamian
 Brian & Shannah Frambes
 Vauntina & Andrew Franklin
 Carol Fraser*
 Katie & Michael Frassinelli

Maryellen Frawley
 Alan Friedman
 Debbie & Dom Friscino
 Colleen Frost
 Greta Fruhan*
 Philippe & Margaret Gabriel*
 Christine Gagner
 Andrea & Christopher Gagnon
 Cathy Gallagher
 Evelina Galper
 Aileen Gardner
 Heather Garni*
 Joan & William Gay
 Becky & Chris Georgenes
 Maura & Alexander Gerhart*
 Mary Ann Giardini
 David & Janet Giele
 Whitney & William Gilchrist*
 Elizabeth Gildea
 Janice & Ray Gilkes
 Beth Gillece-Castro
 Leo Gleason
 Laura Gobron
 Martha Gold*
 Raquel Goldman
 Marjorie & Barry Goldy
 Nancy & Peter Goodall*
 Neil Gordon*
 Jack Gould
 Janice Gould
 Bonnie Gouveia
 Emily Grant
 William & Sharon Gray*
 Glenn Greenberg
 Steven & Anne Greenberg
 Maryellen Griffin
 Noura Guermezi
 Victoria & Jonathan Guest
 John & Christine Guthery
 Mary Jane Guy
 Sherry & Larry Guzman
 Benjamin & Kristen Haddon*
 John Haggerty & Monica Ruehli
 Scott & Laurie Haig*
 Tom Halchuk
 Becky Hamlin
 Nancy Hancock
 The Haque Family*
 Jeffrey Harper
 Charlotte Harrington
 Yolanda Harris
 Charlie Harris, Jr.
 Hans Hartman
 Mubarak Hasan
 Carolyn Hasgill
 Aneeqa Hashimi
 Dale & Gerry Hava

***Contributor to our "A Place to Call Home" capital campaign.**

Roberta Hayes
 Jenni & Bill Haynes
 Helical Research, Inc.
 James & Kathy Hennessey*
 Jim Hensel
 Carol Herman
 John & Jacqueline Herrold
 Linda & Clinton Heyd
 Michael Hill & Christine DeVelis-Hill
 Phyllis Hinsey
 Amy Hoey
 Clifton Holbrook
 Susan Hollis
 Stephen Holt
 Barbara & Bernard Horan
 Jane Horne
 Joanna Horobin
 Therese & David Horton
 Amanda Hsiao
 Emily Hunnewell
 Sissel Hunt
 Marcey & Don Hunter
 Gregory Hunter
 Robert Hunter
 Rebecca Hurley
 Sohail Husain
 Amina Hussain
 Gracie Idzal
 Randi Ingerman
 Pete Isberg
 Jon Jaboolian
 Marc Jacobs
 Erica Jacobson
 Jennifer Jacobson
 Carol Jankowski
 Cherine & Howard Janzen
 Jim Fisher Electric Company
 John Everett & Sons Funeral Home
 Chelsea Johnson*
 Lynne & Randy Johnson
 John Wiley & Sons, Inc.
 Jacqueline Jones
 Martha Kam
 Dimitri Kambouris
 D. Louise Kane
 Arline Kardasis
 Jen Karofsky
 The Kassim Family
 Katherine & John Kaufmann
 The Kazmi Family
 Michelle Keating
 The Keil Family
 Amy & Andrew Keith*
 Trish Kelliher
 Marie Kemmler
 Greg Kennan & Jane Materazzo
 The Kennedy Family

Kim Keough
 Armen & Kate Khachaturian
 Adnan Khalid
 Hajra & Fahd Khan
 Afroz Khan
 Mohiuddin & Muneeb Khan
 Khadija Khan
 The Khan Family
 Miriam Kimball
 Janet King
 Nancy & Edward Kingsbury
 The Kittler Family
 Katrina Klaus*
 Adam Klein
 Laura Klein
 Mary B. Knechtle
 Judy & Tom Kokinda
 Kristina Kolman
 Betsy & Andrew Komjathy
 Christine Konys
 Carol Kosicki
 Dan Kozin
 Jason Krantz
 Susan Kuntz
 Ann & Tom Lally
 Regina LaRocque
 Rose Lawrence
 Stephen & Katherine Leavey
 Carolyn Lee
 Abigail Leiber
 Sean Leonard
 Dena Lerra
 Richard Levy
 Mark & Carolyn Libby
 Evelyn & Peter Liffiton
 Lauren Lin
 Jean Linke
 John & Dianne List
 Gail & Gary Lockberg
 James & Alice Loehlin
 Julia Logan & Dmitri Yakovlev
 Lola's Italian Groceria
 Mary Lou LoVecchio
 Michelle Lovely
 Gregory Lovely
 Joan & Beirne Lovely
 Susan Luliano
 Isabel Lyndon
 Nancy MacCormack
 Vykki MacKenzie
 Lynn MacKinnon
 Stephen Mahoney
 Management Perspectives
 Sue & Ellen Mandell*
 Paige Manning
 Carol Manning
 Kenneth Marshall

Jacob & Elizabeth Martin
 The Martin Family
 Shaina Martinez
 Sue & Steve Mascioli
 Marie Matava
 Aaron Mateychuk
 Marguerite Mauldin
 Susan & Gerald Mazor
 The McAdams Family
 Cindy McAuley
 Sarah McCarron
 Anne McCarthy
 Betsy McClendon*
 Cam McCormick
 Alison & Myles McCormick
 Matthew McCue & Paula Passi-McCue
 Andrea McDonald
 Ann McGonigle
 John & Cynthia McReynolds
 Karen Melican
 Mera Consulting Group
 Hallet Merrick III
 Al & Susan Merson
 James & Jill Metcalf
 MetroWest Brits
 Jennifer & Travis Metz*
 Brenda Metzler
 The Miles Family
 Catherine & Peter Mitchell
 Marge Mitchell
 Elaine Mittell & Douglas Poutasse
 Simona Mocuta
 Joanna Mongiardo-Coogan
 Elizabeth Montemayor
 Jessica Mooraj
 Paula & John Moran
 The Moreira Family
 Vincent & Natalia Morgan*
 The Morris Family
 Carole Morse
 Cindy & Paul Mortali
 Barbara Morton
 Bouthayna Mouline
 Bruce Mount
 Copa Mukherjee
 Helen Murphy
 Lana Murphy
 Donna & Gregg Murphy
 Martha Murray
 Kerry Muzyka
 Susan Mykrantz & Don Jack
 Margaret Naeser
 Dorothy & Jim Nail
 Susan Naja
 Huma Najam*
 The Nawab Alam Family*
 Seta Nazarian

Nancy Nelson
 Karen Neurath
 Leslie Newell
 Adam Newman
 Newton Country Day School
 The Ng Family
 John Nichols
 Abi Niit & Caroline Beaudet
 Jonathan Noel
 Hans Nordby
 Deanna & A. Timothy Norton
 Marilyn Nutting
 Oak Realty
 Pauline O'Bray
 Tom O'Brien
 Alan O'Driscoll
 Pam & Jerry Offsay
 Walter O'Hearn
 David & Christina Oliver
 Sean & Janna O'Neill*
 Brad O'Neill
 Christopher O'Neill
 Dennis Ortell & Kathleen Snapper
 David & Deborah Osborn
 Michelle Ottaviano
 David & Laurie Otten
 Mark Owen
 Miho & Evan Owens
 Noorjahan Panjwani
 Lisa Pantaleo
 Thomas Pappas
 Catherine & David Paquette*
 Karla Pastore*
 Emily Paul
 Kevin Pawl
 Jennifer Peacr
 Sarah Pedersen
 Annette Pein & James Gorman
 Karen & William Pekowitz
 Edward & Anne Perkin*
 Via Perkins
 Suellen Perold
 Donald & Judith Peters
 Paul & Carol Peterson
 Olivia Petrasch
 William Philbrick
 Stanley & Cyndy Piekos
 Adriano Pimenta
 Ina & John Portnoy*
 Carol Powell
 Gerald Precious
 Maryl Price
 Peter Princi
 Mahwish Qamar
 April Quinn-Paquet*
 Gary Rabideau
 Robert Ramage

Rashmi Ramaswamy
 Marjorie Raskin
 Nahid Rathore
 The Rauch Family
 Syed Razvi
 Subheen Razzaqui
 Rebound Physical Therapy
 Dianne & Bill Rees
 Monica Reid
 Maura & Jeffrey Renzella*
 The Reservoir Center for Health & Rehabilitation
 Tammy & David Retalic
 Walter Reuning
 Mark & Christina Reynolds*
 Tracy & Amir Reza
 Shadman Riaz
 Deborah Riester
 Karen & Ron Riggert
 Jeff & Janet Ringuest
 Patrica & Paul Riseman*
 Kathy Rivet
 Lisa & Rick Rizoli
 Adrian Robbins-Cole
 Marge Roberson
 Cornelia Clark Roberts
 Phillip Roberts
 Peg & Dwight Robinson
 Peter Roblin
 Tom & Kim Rocco
 Jane & Carl Roddy
 Susan Roer
 Colleen Roller
 Rowan Family Foundation
 Andrew Ruggiero
 Jema Russo & Dylan Bernd*
 Jon & Melissa Rutherford
 Leo Ryan
 Hamed Saeed
 Nadia & Carl Salerno
 Pamela Salonia
 Elizabeth Sandeman*
 Barbara & Jeff Sands
 Karla Sangery
 Charlotte Sanner
 Rosann Santorelli
 Daniel & Bethann Schacht
 Chris Scheller
 Lynn Scheller
 John & Lily Schlafer
 Katherine Schleyer
 Marcia Schloss
 The Schwietz Family
 Kari Sciera
 Donna Scott
 Angela Selnick
 Sandy Selvey

Paul Shackford
 Heather & Robert Shanahan*
 Maura Shaughnessy
 Lubna Sheikh
 Brigham Shields
 Joanna Shumway
 The Siciliano Family
 Amy Siegel
 Laura Silvian
 Marcia Testa Simonson*
 Michael & Alisa Skatrud
 Moushmi Soleja
 Alison & Andy Sonderfan
 Stephen Sonis
 Kristine Spadaccia
 Mark & Paula Ness Speers
 Lynda Sperry
 Mary Anne Squire
 Bev & Larry St. Clair
 Jacquelyn Stathis
 Margie & Allen Steere
 Georgia Stephenson
 Ben Stephenson
 Karen & Errol Stevens
 Sylvia Stevens
 Geoffrey & Joyce Stewart
 Jackee Stigliano*
 Pam & Craig Stirrat
 Arthur & Barbara Stock
 Diane Stone
 The Strand Family
 Cynthia & Rich Stratton
 The Stylianopoulos Family
 Elaine Sullivan
 Justin Sumner
 P. Jonas & Elizabeth Svedlund
 Michelle Syed
 Marianne & Arthur Talis
 Clark & Kay Taylor
 Darren Tedesco
 Drs. Thiel, Wang & Associates
 Beth Thomas
 Stephanie Thompson
 Jane Thompson
 Thought and Purpose, Inc.
 Karen Thurston
 The Tipton Family
 Mark & Mary Beth Tobin
 Sal & Roseli Tocco
 Joelle Tomb & Christopher Zakak*
 Lois & Bill Tougas
 Scott Tougas
 Jennifer Tratnyek
 Joseph & Marion Tratnyek
 Linda Trent
 Elyse Trockman*
 Kimberly & Rob Tyler*

***Contributor to our "A Place to Call Home" capital campaign.**

United Way of Coastal Fairfield County
 George Urban
 William & Taryn Valle*
 William & Anne Van Arsdell
 Kenneth Van Blarcom
 Karen Van Voorhis
 Concetta & Bruce Ventura
 VFW Auxiliary Post 1274
 Beth & Frank Villa
 Mark & Julia Viviano*
 Catherine Volic
 Dana Volman
 Hiltrud Walsh
 Jonathan & Ellen Ward
 Alice Ward
 Kevin Wasielewski
 Rebecca & Andy Wasynczuk
 Wayland Animal Clinic
 Wegmans Food Markets
 Virginia Doree Weinig
 Christine Weitzel
 Martha Welsh
 Christine Weston
 Julie White*
 Dana White
 Brian White
 Jack & Jill Whiting
 John & Dorothy Whitlock
 Sally Whitman
 Kim & Bill Whittemore
 Nicole Wiemeyer
 Heidi Wiesel
 Sue Wilcove & Sandy Moskowitz

Richard Williams
 Sarah & Landen Williams*
 Kimberly & Donald Williamson
 Elizabeth Wilson
 Eunice Wilson
 Betsy Wilson
 Ruth Wilson
 Chris & Craig Winterfeldt
 Marilyn Wolman
 Jodi Wood
 Stephanie Wooster
 WOW Book Group of Natick
 Fred Wright
 Pauline Broman Wright
 Edward Wynne
 Joe & Amy Yang
 Saima Yanus
 Phoebe Yassa
 Barbara Yates
 Rob Young & Family
 Julie Zadow
 Ellen & Stan Zagajeski
 Barbara & James Zebrowski
 Raymond & Kathie Zeman
 Farhana Zia
 Cathy Zimmerman
 Margaret Zusky

**We also extend our gratitude to the
 1,336 additional donors who gave under
 \$100 in 2017. We are thankful
 for every one of you!**

In-Kind Event Donors

**We would like to thank the following
 companies who donated in-kind goods
 to make our 2017 events a success:**

110 Grill
 Amazon Pop-Up
 American Girl
 B.GOOD
 Bertucci's
 Boston Gourmet Chefs
 British Beer Company
 Burtons Grill & Bar
 Conrad's Restaurant
 Dion's Wine
 Dunkin' Donuts
 Joe's American Bar & Grill
 John Harvard's Brewery & Ale House
 Keefe Regional Technical School
 Lola's Italian Groceria
 The Lookout Taproom
 The Melting Pot
 Microsoft
 Neiman Marcus Café
 P.F. Chang's China Bistro
 Papa Razzi Trattoria
 Sheraton Framingham Hotel &
 Conference Center
 Twist Bakery Café
 Wegman's Food Markets
 Whole Foods Market
 WROR 105.7
 Zoup!

We are grateful to the following congregations for their generous financial support:

Christ Lutheran Church, Natick
 Christ the King Lutheran Church
 Congregational Church of Needham
 The Dover Church
 The Eliot Church of Natick
 First Baptist Church, Framingham
 First Baptist Church, Needham
 First Church of Christ, Scientist, Natick
 First Congregational, Holliston
 First Congregational, Natick
 The First Parish in Wayland
 Fisk Memorial United Methodist, Natick
 Framingham Friends Meeting
 High Rock MetroWest
 Holy Spirit Catholic Community
 Islamic Center of Boston, Wayland
 Memorial Congregational Church UCC

Most Precious Blood Church, Dover
 Newton Highlands Congregational
 Pilgrim Church, Sherborn
 Presbyterian Church of Sudbury
 St Paul's Episcopal, Natick
 St. Andrew's Episcopal, Framingham
 St. Andrew's Episcopal, Wellesley
 Temple Beth Elohim, Wellesley
 Unitarian Universalist Area Church
 United Methodist Women of Fisk Memorial
 United Methodist Women, CUMC Wayland
 UU Society of Wellesley Hills
 Wellesley Hills Congregational
 Wellesley Village Church
 Wellesley Village Churchwomen
 Women's Alliance, UUAC Sherborn



Contact Us:

Family Promise Metrowest
6 Mulligan St.
Natick, MA 01760
508-318-4820
www.familypromisemetrowest.org
info@familypromisemetrowest.org

Find Us on Social Media:



Graphic design by MV Designs, www.michellelaviradesigns.com.

Photos on front cover, back cover, and pages 7-9 by Aaron Washington Photography, www.aaronwashington.com.