



Family Promise Metrowest

a community response to families who are homeless

March 27 2015

Join Us to Walkaway Homelessness!



On April 11, Family Promise Metrowest will host our 6th Annual Walkaway Homeless event on Natick Common. The 3.1 mile event will feature music from WROR personality LBJ, fun and games for children, massages from Down to Earth Muscular Therapy and a variety of raffle prizes to win!



Don't forget, for every \$100 raised you will be eligible



to win a pair of round-trip tickets on jetBlue, a Microsoft Fitbit or two Red Sox tickets!



Haven't registered yet? It's not too late to sign up for the fun - check out [here](#) for more information or if can't make the walk and would like to donate click the image below.

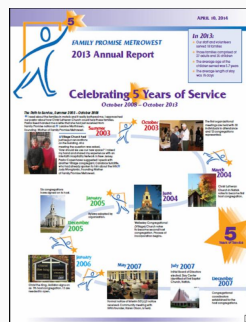


Proceeds raised from the Walkathon support our families with daycare, case management, job training and health services to name a few.

We are grateful to all sponsors of all levels and appreciate your generosity and dedication to our organization. We could not do what we do without you!

2013 Annual Report is Here!

Click to download your copy.



Staff

- Carole Brodrick**
Community Development Coordinator
- Sue Crossley**
Executive Director
- Catherine Leopold**
Administrative Assistant
- Judy Mongiardo**
Network Coordinator
- Eliz Portal**
Transitional Housing Case Manager

Board of Directors

- Bob Murray, *Chair*
- Jim Roberts, *Treasurer*
- Lecia Shronce, *Clerk*
- Donna Angelico
- Kim Cohen
- Kathy McGraw-Bentley
- JoAnne Marshall
- Morgan Molloy
- Rev Adam Tierney-Eliot

Thank You To Our Sponsors



[Click here for Host and Support Congregations](#)

Family Updates

Bility continues to work two jobs; one in a preschool and the other in food services. Earlier this month **Sebastian** celebrated his first birthday. Bility decorated the day center and welcomed friends and family to join the celebration at the Day Center.



Make a wish Sebastian! .

We are pleased to announce that **Daisy** began a new job last month! **Carlos** remains to be happy at his job and **Amber** continues to attend daycare.

Jackie continues to work and while two of her children enjoyed music camp over February vacation. The children also appreciate after-school tutoring offered by volunteers at the Day Center.

~~~~~  
**Yusuf** remains to be actively involved on behalf of FPM, speaking at congregations and social events. **Jane** continues to work as a CNA and is focused on completing prerequisites for applying to a Practical Nursing program in the Fall.

**Eva** recently attended an International Vision Expo and Conference in New York City, where she had the opportunity to learn more about the industry and had a chance to network with other eye care professionals.

**Melvin** continues to work full-time in mechanics and **Jadiel** is looking forward to starting kindergarten in the Fall.

## Hearty Team Hardy

Students from the Hardy Elementary School, Wellesley welcomed Judy Mongiardo, Network Coordinator, on March 4 to their after school service club as they prepare to Walkaway Homelessness with Family Promise Metrowest on Saturday, April 11, 2015.

## Community Partners

### Champions





Judy presents to Team Hardy

The students learned about the issue of family homelessness in Massachusetts and how FPM is making a difference. They also designed colorful posters to carry on their walk as signs of inspiration.

Thank you to parents, Christine Blackett and Karen McAdams, for organizing this opportunity

Go, Team Hardy!

## Hop Over to the Cottage



On April 4, The Cottage Restaurant, of Wellesley will be hosting an "Easter Bunny Charity Brunch" with 100% of all proceeds from children's meals to benefit FPM; children \$10, adults: \$20

Along with food, The Cottage will engage children with crafts, an egg hunt, goody bags and a fun time with the Easter bunny!

Two seatings: 8 and 9:45 AM. Space is limited so call soon as are reservations required: 781-239-1100. Be sure and bring your camera!

## Business Spotlight

We are so fortunate at FPM as many businesses offer donations through their charitable foundations or sponsorships.

This month we would also like to share other ways local businesses have supported our families by sharing their professional expertise and facilities.



### Cheerleaders

Boston Scientific

### Friends

AT&T

Best Buy

Bose Corporation

Boston Interiors

Brookline Bank

Circle of Hope

Coldwell Banker, Natick

CJP

DCU Credit Union

Dunkin' Donuts

ERA Key Realty

Framingham Rotary Club

GE Foundation

Harvard Vanguard

Highland Street Foundation

Hologic-CYTYC Corp

Liberty Mutual Insurance

The Lombardo Family

MathWorks

Microsoft

Middlesex Savings Bank

Robert Hunsicker Foundation

Roche Bros./Sudbury Farms

Rotary Club of Natick

State Street Matching Gift

Temple Shir Tikva

Tobin Family of Schools

Walmart

## Haskins' Heroes

Generous help for our families comes in so many ways, from preparing meals to tutoring. Haskins Automotive of Wellesley, an automotive repair center has proven to be no exception.

Recently one of our guests had significant damage to their car. Haskins stepped in by ensuring that the car was not salvageable and rendered the car as totaled. The employees at Haskins not only did the mechanic work pro bono but also stepped in with researching and finding a new vehicle for our guest to purchase at an affordable price.



Haskins has been a family owned business in the Wellesley area since 1929 and we cannot rave enough about the services they have offered FPM - we are truly grateful for their invaluable work and assistance they have offered our family at such a critical time!

Visit them for more information on services [here](#).

## Picture Perfect

Rachel Rubin, owner of RLR Studio in Framingham recently volunteered her skills to take beautiful photographs of some of our families.

As you can see below from a sample of the snapshots, the photos captured the personalities of our families.

A heartfelt thank you to Rachel for providing the families a chance to relax, unwind and have memorable pictures to frame for their homes.



In addition to photography, Rachel has a sister company,



Are you a Thrivent Choice® policyholder? If so, eligible members are able to recommend where some of Thrivent Financial for Lutherans' charitable outreach funds go and FPM is eligible!

In 2013, the organization donated over \$100 million to thousands of non-profits throughout the country.

Program details can be found [here](#).

## Quick Links

[Host Rotation Schedule](#)

[Volunteer Training Dates](#)

[Needed Items](#)

[Volunteer Opportunities](#)

Beauty PaRLR where she combines her natural ability to transform any model subject into a true work of art

Click [here](#) to visit her website

## Cheers to Tobey Grey

At the end of February, Tobey Grey in Wellesley, hosted "Fashion and Fun" an event where participants socialized and enjoyed an evening of shopping. Attendees sipped champagne, snacked on a cheese plate donated by Lombardo's of Randolph and decadent cupcakes made by volunteers Dale Crowe and Diana Carroll.

Tobey Grey kindly donated 10% of sales that evening to benefit FPM. Many thanks to their staff who assisted us with sales and support during the evening's activities.

Take a look at Tobey Grey fashions [here](#).



Karen Miller and Debbie Kahn enjoying the fashions of Tobey Grey.